



# AliMed® Radiation Protection Aprons

## Learn more about AliMed Aprons

### ▶ QUICK SHIP

- Ship within 24 hours
- Color-coded by size

### ▶ PERSONALIZED and ▶ PERFECT FIT™

- Choose from over 50 colors and patterns
- Perfect Fit™—custom sizing at no extra charge
- Monogram at no extra cost (e.g., name, initials, department)
- Embroidery designs available
- Add an attached thyroid shield
- Ship in 15 business days

## Table of Contents

• Buyer's Guide	pp. 2, 3
• Quick Ship Aprons	pp. 4, 5
• Personalized and Perfect Fit™ Aprons	pp. 6, 7
• Thyroid Shields	p. 8
• Apron Color Choices	p. 9
• Monogram and Embroidery Choices	p. 10
• Standard Sizing	p. 11
• Personalized Order Form	p. 12
• Perfect Fit™ Sizing	p. 13
• Perfect Fit™ Order Form	p. 14

See pp. 4-7 for our **NEW Ultralight Lead-Free Aprons!**



All Personalized and Perfect Fit Apron and Thyroid Shield orders must be faxed. Order forms are on pp. 12, 14.

#6192d

# Choosing the right apron for you

## ABOUT ALIMED APRONS

AliMed offers a large selection of aprons with multiple styles, protective materials, sizing options and personalization options. All of our aprons are:

- Backed by a 2-year warranty
- Made in the USA
- Tested at Johns Hopkins University
- 0.5 mm Pb equivalent front protection on all aprons; meets or exceeds all state regulations
- Latex-Free
- Equipped with shoulder pads and pockets on every apron



Read below to help decide if a Quick Ship, Personalized, or Perfect Fit apron is right for you.



## AVAILABILITY AND CUSTOMIZATION

AliMed carries three lines of aprons. Look for symbols in our Buyer's Guide to see if the style you want is available for Quick Ship, Personalized, or Perfect Fit Aprons.

### ▶ QUICK SHIP

(Ship within 1 business day)

- Color-coded by size for easy departmental sharing
- Standard sizes from Small to 2XL
- Monogramming not available
- Matching unattached thyroid shields available
- Available in 7 styles

### ▶ PERSONALIZED

(Ship within 15 business days)

- Choose from over 50 colors—including Odor-Control fabric with antimicrobials
- Standard sizes from Small to 2XL
- **FREE** monogramming
- Ability to attach a thyroid shield
- Available in 9 styles

### ▶ PERFECT FIT™

(Ship within 15 business days)

- Choose from over 50 colors—including Odor-Control fabric with antimicrobials
- **FREE** custom sizing
- **FREE** monogramming
- Ability to attach a thyroid shield
- Available in 9 styles

## STYLE OPTIONS

To help you decide which style apron would suit you best, choose the main benefit you need, then read about the differences within that category.



Basic Quick Drop



Adjustable Quick Drop



Weight Reliever



Flex Weight Reliever\*



Back-Aid



Tie



Vest and Kilt



Reverse Vest and Kilt\*



Coat

### Surgical Drop-off†

For those who need to remove an apron during surgery without breaking sterile field

#### Basic Quick Drop Apron

Drops away during surgery with the release of two points—without breaking the sterile field.

#### Adjustable Quick Drop Apron

Similar to Basic Quick Drop, with the addition of hook-and-loop straps at the shoulders to improve fit in axillary area. Elasticized back for better fit!

\*Reverse Vest and Flex Weight Reliever are not available as Quick Ship aprons.

†Surgical Drop-off aprons offer front protection only.

### Front Protection

For those who need a front protection apron with no drop-away feature

#### Weight Reliever Apron

Weight is evenly distributed by fully adjustable hook-and-loop straps that cross in the back.

#### Flex Weight Reliever Apron

Similar to Weight Reliever with the addition of elasticized back and shoulder strap for a closer fit.

#### Back Aid Apron

6"W Back-Saver Belt keeps weight off shoulders.

#### Tie Apron

Our most economical apron. 1" tie straps and shoulder straps keep apron snug and in place.

### Front/Back Protection

For those who circulate or will have their back to the radiation source

#### Vest/Kilt Apron

Two-piece apron that splits the weight between shoulders and hips. Two Vest styles available—Standard Vest or Reverse Vest.\*

#### Coat Apron

Our one-piece front/back protection apron. Comes standard with 6"W Back-Saver Belt to keep weight off shoulders.

\*Reverse Vest and Flex Weight Reliever are not available as Quick Ship aprons.

# Choosing the right apron for you

## PROTECTION AND WEIGHT


AliMed offers three types of protection, all offering 0.5 mm Pb equivalent front protection. 0.25 mm Pb back protection on Vests, Kilts, and Coat Aprons. All materials attenuate 90% at 100 kVp.

All materials are available for

**▶ QUICK SHIP**

**▶ PERSONALIZED**

**▶ PERFECT FIT™**

Standard Lead	Lightweight Lead	Lead-Free	Ultralight, Lead-Free 
10.1 lbs.*	8.7 lbs* <b>14% lighter</b> than standard lead	8 lbs.* <b>20% lighter</b> than standard lead	7.3 lbs.* <b>25% lighter</b> than standard lead
Our standard weight lead is the most economic option and best for shorter procedures.	Same protection at a lighter weight. Good for short- to medium-length procedures.	Contains no lead but offers the same protection as lead aprons. Requires no special disposal. Good for medium-length to long procedures.	<b>World's lightest aprons!</b> Lead-free but offers the same protection as lead aprons. No special disposal required. Best for long procedures.

\* Based on Large Front Protection aprons.

## SIZING OPTIONS

**Standard Sizes** As easy as choosing Small, Medium, Large, XL, or 2XL. Great for departmental ordering. We suggest ordering different sizes in different colors for ease of identification.

Detailed sizing information on p. 11.



Our newest option is **Perfect Fit™ Sizing**—and it's FREE. Great for those ordering a personal apron. Allows you to get a custom fit, offering better protection and comfort. Must be ordered via fax using order form on p. 14.

Perfect Fit sizing information on p. 13.

**▶ QUICK SHIP**

**▶ PERSONALIZED**

**▶ PERFECT FIT™**

## FABRICS AND COLORS

**Standard Nylon** Our standard fabric is extremely durable and tear-resistant. Available in over 50 colors—including solids, diamonds, and patterns. See p. 9 for our selection.

**Odor-Control Fabric** contains antimicrobial protection that lasts the life of the apron, protecting it from microbial attack. Available in three unique color choices, in a linen-textured vinyl. See p. 9 for our selection.

**▶ QUICK SHIP**

**▶ PERSONALIZED**

**▶ PERFECT FIT™**

**▶ PERSONALIZED**

**▶ PERFECT FIT™**



## MONOGRAM

Any Personalized or Perfect Fit apron or thyroid shield can be monogrammed with your initials, name, institution, etc., at no extra charge. Three lettering styles available, shown below. Order using form on pp. 12, 14.

Font Style:

Examples:

Block

Rick E. Barnes, M.D.

ALL CAPS

RICK E. BARNES, M.D.

Script

Radiology Department



**▶ PERSONALIZED**

or

**▶ PERFECT FIT™**

**▶ QUICK SHIP**

# Aprons ship within 24 hrs



Read about our styles and materials in our Buying Guide, pp. 2, 3.

Quick Ship aprons are color-coded by size for fast identification!

Personalize your aprons with a monogram (p. 10) or our Perfect Fit Sizing (p. 13)! (Longer shipping time applies.)

**NEW!**  
World's lightest apron!

## Quick-Drop Surgical—Front Protection

**Basic Quick Drop**—for scrubbed personnel



- Allows removal during procedures without breaking sterile field
- Releases from two points at hips and falls to the floor
- 0.5 mm Pb front protection

**Adjustable Quick Drop**—for scrubbed personnel



- Closer fit between staff members
- Four-point adjustability
- Drop-away action
- 0.5 mm Pb front protection

## Front and Back Protection

**Vest Kilt**—best multiuser for circulating staff

Male



Female



- 0.5 mm Pb front/0.25 mm Pb back protection
- Two-piece for better weight distribution
- Vests has Male and Female sizing for better fit

### Ultralight Lead-Free

- 7.3 lbs., 27% (2.8 lbs.) lighter than Std. Lead\*
- No special disposal required

### Lead-Free

- 8.0 lbs., 21% (2.1 lbs.) lighter than Std. Lead\*
- No special disposal required

### Lightweight Lead

- 8.7 lbs., 14% (1.4 lbs.) lighter than Std. Lead\*
- For short to medium procedures

### Standard Lead

- 10.1 lbs. \*
- Economical protection for short procedures

Size/Color	Basic Quick Drop	Adj. Quick Drop	Vest/Kilt Male	Vest/Kilt Female
<b>S Red Diamond</b>	#93 6621	#93 6626	#93 6630	#93 6634
<b>M Purple Diamond</b>	#93 6622	#93 6627	#93 6631	#93 6635
<b>L Burgundy Diamond</b>	#93 6623	#93 6628	#93 6632	#93 6636
<b>XL Grey Diamond</b>	#93 6624	#93 6629	#93 6633	#93 6637
<b>2XL Black Diamond</b>	#93 6625	#93 6650	—	—

Size/Color	Basic Quick Drop	Adj. Quick Drop	Vest/Kilt Male	Vest/Kilt Female
<b>S Royal Diamond</b>	#92 2170	#92 2175	#92 7744	#92 7748
<b>M Kelly Diamond</b>	#92 2171	#92 2176	#92 7745	#92 7749
<b>L Taupe Diamond</b>	#92 2172	#92 2177	#92 7746	#92 7750
<b>XL Navy Diamond</b>	#92 2173	#92 2178	#92 7747	#92 7751
<b>2XL Fir Diamond</b>	#92 2174	#92 2179	—	—

Size/Color	Basic Quick Drop	Adj. Quick Drop	Vest/Kilt Male	Vest/Kilt Female
<b>S Black/Rose**</b>	#92 7631	#92 7636	#92 7660	#92 7665
<b>M Turquoise</b>	#92 7632	#92 7637	#92 7661	#92 7666
<b>L Burgundy</b>	#92 7633	#92 7638	#92 7662	#92 7667
<b>XL Royal Blue</b>	#92 7634	#92 7639	#92 7663	#92 7668
<b>2XL Light Grey</b>	#92 7635	#92 7640	—	—

Size/Color	Basic Quick Drop	Adj. Quick Drop	Vest/Kilt Male	Vest/Kilt Female
<b>S Red</b>	#92 7599	#92 7603	#92 7623	#92 7627
<b>M Medium Blue</b>	#92 7600	#92 7604	#92 7624	#92 7628
<b>L Navy</b>	#92 7601	#92 7605	#92 7625	#92 7629
<b>XL Kelly Green</b>	#92 7602	#92 7606	#92 7626	#92 7630

\*\*Female Small is Rose, Male Small is Black.

\*Based on Large Coat Apron



**▶ QUICK SHIP**

# Aprons ship within 24 hrs



**NEW!**  
World's lightest apron!

Read about our styles and materials in our Buying Guide, pp. 2, 3.

Quick Ship aprons are color-coded by size for fast identification!

Personalize your aprons with a monogram (p. 10) or our Perfect Fit Sizing (p. 13)!  
(Longer shipping time applies.)

## Front and Back

**Coat Apron—**  
with back protection  
for circulating staff



- 6"W Back-Saver Belt lifts weight off shoulders and onto hips
- 0.5 mm Pb front/0.25 mm Pb back protection

## Front Protection

**Weight Reliever—**  
for continuous wear  
without fatigue



- Criss-cross straps distributes weight
- 0.5 mm Pb front protection

**Back Aid Apron—**  
built-in lower back  
safety



- Attached 6"W Back-Saver Belt distributes weight better
- Keeps weight off shoulder
- 0.5 mm Pb front protection

**Tie Apron—**  
best value for  
large department



- Attached tie closure
- Hook-and-loop shoulder strap helps prevent slippage
- 0.5 mm Pb front protection

### Ultralight Lead-Free

- 7.3 lbs., 27% (2.8 lbs.) lighter than Std. Lead\*
- No special disposal required

### Lead-Free

- 8.0 lbs., 21% (2.1 lbs.) lighter than Std. Lead\*
- No special disposal required

### Lightweight Lead

- 8.7 lbs., 14% (1.4 lbs.) lighter than Std. Lead\*
- For short to medium procedures

### Standard Lead

- 10.1 lbs. \*
- Economical protection for short procedures

Size/Color	Coat	Weight Reliever	Back Aid	Tie Apron
<b>S Red Diamond</b>	#93 6612	#93 6642	#93 6638	#93 6616
<b>M Purple Diamond</b>	#93 6613	#93 6643	#93 6639	#93 6617
<b>L Burgundy Diamond</b>	#93 6614	#93 6644	#93 6640	#93 6618
<b>XL Grey Diamond</b>	#93 6215	#93 6647	#93 6641	#93 6619
<b>2XL Black Diamond</b>	—	#93 6649	#93 6648	#93 6620
Size/Color	Coat	Weight Reliever	Back Aid	Tie Apron
<b>S Royal Diamond</b>	#92 2195	#92 2185	#92 2190	#92 2180
<b>M Kelly Diamond</b>	#92 2196	#92 2186	#92 2191	#92 2181
<b>L Taupe Diamond</b>	#92 2197	#92 2187	#92 2192	#92 2182
<b>XL Navy Diamond</b>	#92 2198	#92 2188	#92 2193	#92 2183
<b>2XL Fir Diamond</b>	—	#92 2189	#92 2194	#92 2184
Size/Color	Coat	Weight Reliever	Back Aid	Tie Apron
<b>S Rose/Black**</b>	#92 7651	#92 7646	#92 7655	#92 7641
<b>M Turquoise</b>	#92 7652	#92 7647	#92 7656	#92 7642
<b>L Burgundy</b>	#92 7653	#92 7648	#92 7657	#92 7643
<b>XL Royal Blue</b>	#92 7654	#92 7649	#92 7658	#92 7644
<b>2XL Light Grey</b>	—	#92 7650	#92 7659	#92 7645
Size/Color	Coat	Weight Reliever	Back Aid	Tie Apron
<b>S Red</b>	#92 7615	#92 7611	#92 7619	#92 7607
<b>M Medium Blue</b>	#92 7616	#92 7612	#92 7620	#92 7608
<b>L Navy</b>	#92 7617	#92 7613	#92 7621	#92 7609
<b>XL Kelly Green</b>	#92 7618	#92 7614	#92 7622	#92 7610

\*\*Female Small is Rose, Male Small is Black.

\*Based on Large Coat Apron

# Personalized and Perfect Fit™ Aprons

Personalize your apron with monogramming, embroidery, and/or custom sizing

How  
to  
order

1. Choose apron style
2. Choose apron weight or lead-free Odor-Control
3. Choose Standard Size or Perfect Fit™

(use same item number for either Personalized or Perfect Fit orders)

**PERSONALIZED** orders with monogramming must be faxed using form on p. 12.

**PERFECT FIT™** orders must be faxed using form on p. 14.

## Front Protection Aprons



### Basic Quick Drop

- Allows removal during sterile procedures without breaking sterile field
- Releases from two points at hips, and falls to the floor
- 0.5 mm Pb front protection

#93 6514 Ultralight Lead-Free  
#92 7672 Lead-Free  
#92 7671 Lightweight, Lead  
#92 7670 Standard Lead  
#93 4807 Odor-Control, Lead-Free

Specify color and size: S, M, L, XL, 2XL, or Perfect Fit.  
See order forms on pp. 12, 14.



### Adjustable Quick Drop

- Closer fit
- Four-point adjustability
- Drop-away action
- 0.5 mm Pb front protection

#93 6499 Ultralight Lead-Free  
#92 7675 Lead-Free  
#92 7674 Lightweight, Lead  
#92 7673 Standard Lead  
#93 4808 Odor-Control, Lead-Free

Specify color and size: S, M, L, XL, 2XL, or Perfect Fit.  
See order forms on pp. 10, 12.



### Weight Reliever

- Criss-cross straps distribute weight
- 0.5 mm Pb front protection

#93 6516 Ultralight Lead-Free  
#92 7681 Lead-Free  
#92 7680 Lightweight, Lead  
#92 7679 Standard Lead  
#93 4810 Odor-Control, Lead-Free

Specify color and size: S, M, L, XL, 2XL, or Perfect Fit.  
See order forms on pp. 12, 14.



### Flex Weight Reliever

- Elasticized criss-cross straps for better fit, comfort, and adjustability
- 0.5 mm Pb front protection

#93 6515 Ultralight Lead-Free  
#92 7684 Lead-Free  
#92 7683 Lightweight, Lead  
#92 7682 Standard Lead  
#93 4811 Odor-Control, Lead-Free

Specify color and size: S, M, L, XL, 2XL, or Perfect Fit.  
See order forms on pp. 12, 14.  
Not available as a Quick Ship item.



### Back Aid

- Attached 6"W Back-Saver Belt distributes weight better
- Keeps weight off shoulder
- 0.5 mm Pb front protection

#93 6517 Ultralight Lead-Free  
#92 7690 Lead-Free  
#92 7689 Lightweight, Lead  
#92 7688 Standard Lead  
#93 4813 Odor-Control, Lead-Free

Specify color and size: S, M, L, XL, 2XL, or Perfect Fit.  
See order forms on pp. 12, 14.



### Tie Apron

- Attached tie closure
- 0.5 mm Pb front protection

#93 6513 Ultralight Lead-Free  
#92 7678 Lead-Free  
#92 7677 Lightweight, Lead  
#92 7676 Standard Lead  
#93 4809 Odor-Control, Lead-Free

Specify color and size: S, M, L, XL, 2XL, or Perfect Fit.  
See order forms on pp. 12, 14.



Note: Personalized and Perfect Fit aprons are not returnable.

# Personalized and Perfect Fit™ Aprons

Personalize your apron with monogramming, embroidery, and/or custom sizing

How  
to  
order

1. Choose apron style
2. Choose apron weight or lead-free Odor-Control
3. Choose Standard Size or Perfect Fit™

(use same item number for either Personalized or Perfect Fit orders)

- ▶ **PERSONALIZED** orders with monogramming must be faxed using form on p. 12.
- ▶ **PERFECT FIT™** orders must be faxed using form on p. 14.

## Front and Back Protection Aprons



### Coat Apron

- 6"W Back-Saver Belt lifts weight off hips
- 0.5 mm Pb front/0.25 mm Pb back protection

#93 6518 Ultralight Lead-Free  
 #92 7687 Lead-Free  
 #92 7686 Lightweight, Lead  
 #92 7685 Standard Lead  
 #93 4812 Odor-Control, Lead-Free  
 Specify color and size: S, M, L, XL, or Perfect Fit.  
 See order forms on pp. 12, 14.



### Kilt Separate

- 0.5 mm Pb front protection
- Two-piece—best weight distribution

**Unisex**  
 #93 6510 Ultralight Lead-Free  
 #92 7699 Lead-Free  
 #92 7698 Lightweight, Lead  
 #92 7697 Standard Lead  
 #93 4816 Odor-Control, Lead-Free  
 Specify color and size: S, M, L, XL, or Perfect Fit.  
 See order forms on pp. 12, 14.



### Vest Separate

- 0.5 mm Pb front/ 0.25 mm Pb back protection
- Two-piece—best weight distribution

**Male**  
 #93 6509 Ultralight Lead-Free  
 #92 7693 Lead-Free  
 #92 7692 Lightweight, Lead  
 #92 7691 Standard Lead  
 #93 4814 Odor-Control, Lead-Free

**Female**  
 #93 6508 Ultralight Lead-Free  
 #92 7777 Lead-Free  
 #92 7778 Lightweight, Lead  
 #92 7779 Standard Lead  
 #93 4817 Odor-Control, Lead-Free  
 Specify color and size: S, M, L, XL, or Perfect Fit.  
 See order forms on pp. 12, 14.



### Stretch Back Reverse Vest Separate

- 0.5 mm Pb front/ 0.25 mm Pb back protection
- Stretch back allows a closer fit and better weight distribution

**Male**  
 #93 6505 Ultralight Lead-Free  
 #92 7696 Lead-Free  
 #92 7695 Lightweight, Lead  
 #92 7694 Standard Lead  
 #93 4815 Odor-Control, Lead-Free

**Female**  
 #93 6504 Ultralight Lead-Free  
 #92 7780 Lead-Free  
 #92 7781 Lightweight, Lead  
 #92 7782 Standard Lead  
 #93 4818 Odor-Control, Lead-Free  
 Specify color and size: S, M, L, XL, or Perfect Fit.  
 See order forms on pp. 12, 14.



Note: Personalized and Perfect Fit aprons are not returnable.



# Thyroid Shields

All AliMed Thyroid Shields have internal seams and no top binding to help prevent chafing. Hook-and-loop closure. All four protective materials offer 0.5-mm Pb equivalent protection. New Ultralight Lead-Free material requires no special disposal, is better for the environment, and is the lightest weight available. Lightweight Lead and Standard Lead are more economical alternatives. Available Quick Ship for fast shipment or can be personalized with color or monogram.

Also available in Lead-Free Odor-Control fabric with antimicrobials! Great for shared shields.



## Thyroid Shields, Attached



Attached Thyroid Shield (shown open) Attached Thyroid Shield (shown closed)

When purchasing a Personalized or Perfect Fit Apron, you have the option of adding an Attached Thyroid Shield. A webbing strap is sewn to the collar of the apron so you never lose your shield. Shield can be removed by releasing the buckle should you need to replace it.

This is an optional accessory and must be ordered at the time of apron order. No separate item number needed. Specify color, protective material, and monogram. To order shields with standard sized aprons, use order form on p. 10. To order shields with Perfect Fit™ Aprons, use order form on p. 14.

### Attached Thyroid Shields

Ultralight, Lead-Free

Lead-Free

Lightweight, Lead

Standard Lead

Odor-Control, Lead-Free\*

\*Only available in Khaki, Light Blue, or Seafoam. See color chart at right.

## Thyroid Shields, Unattached

### ▶ QUICK SHIP

- Color selection coordinates with our Quick Ship Aprons
- Same-day shipment (if ordered before 3:00 p.m. EST)

(Monogramming is not available on Quick Ship Shields. For monogramming, order a Personalized shield.)



#93 6521 Ultralight, Lead-Free  
Diamond pattern; specify color.



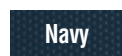
#92 7728 Lead-Free  
Diamond pattern; specify color.



#92 0261 Lightweight, Lead  
Specify color.



#9-590 Standard Lead  
Navy only.



#93 4833 Odor-Control, Lead-Free  
Linen texture, specify color.



#93 5039 Washable Fleece Shield Cover  
Works with unattached shields only. Fleece cover is not antimicrobial.



Washable Fleece Cover is soft against skin.

### ▶ PERSONALIZED

- Over 50 color choices
- Free monogramming available\*
- Allow 15 days until shipment
- **NEW!** Ultralight—our lightest weight lead-free apron
- Odor-Control fabric contains antimicrobials

#93 6521 **NEW!** Ultralight, Lead-Free

#92 7783 Lead-Free

#92 7784 Lightweight, Lead

#92 7785 Standard Lead

Specify color from chart on p. 9.

#93 4832 Odor-Control, Lead-Free  
Linen texture, specify color.



\*Monogrammed orders must be faxed. See p. 14 for order form.





# AliMed® Apron Color Choices

## Solids

Apple Green	Charcoal	Lavender	Rose
Aqua	Chocolate	Light Grey	Royal Blue
Baby Blue	Forest Green	Medium Blue	Tan
Black	Hot Pink	Navy	Teal
Burgundy	Kelly Green	Purple	Turquoise
Carnation	Fawn	Red	Yellow

## Diamonds

Black Diamond	Grey Diamond	Purple Diamond	Royal Diamond
Burgundy Diamond	Kelly Diamond	Red Diamond	Taupe Diamond
Fir Diamond	Navy Diamond		

## Patterns

 Animooos	 Flowers	 Paw Print	 Sky Sheep
 Butterflies	 Golfers	 Penguins	 Splatter
 Camouflage	 Hawaiian Punch	 Playful Kitties	 Sports
 Chicklets	 Leopard	 Puppies	 Denim
 Marbles	 See 'N Stars		

Odor-Control w/Antimicrobials (must be ordered with an Odor-Control Apron sku—see pp. 6, 7)

Khaki	Light Blue	Seafoam
-------	------------	---------







# Monogram Choices

Any Personalized or Perfect Fit™ Apron or Thyroid Shield can be monogrammed with your initials, name, institution, etc., at **no extra charge**. All monogrammed orders must be faxed to ensure accuracy. Order form on pp. 12, 14..

Specify **Block**, **ALL CAPS**, or **Script**.



Font Style:

Examples:

Block

Rick E. Barnes, M.D.

ALL CAPS

RICK E. BARNES, M.D.

Script

Radiology Department



# Apron Embroidery Choices



Heart Scroll



Heart w/EKG



Heart w/Scope



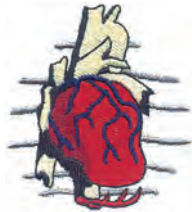
Bear w/Heart



Caduceus w/Heart



Patriot Heart



Cardiology



Caduceus



Balloons



Dancing Skeleton



Bone & Joint



RN Logo



Doctor Smiley



Smiley



Sun w/Glasses



Flag



Musician



Flowers in Pitcher



Butterfly



Golf USA



Golf Clubs



Golf Ball w/Tee



Broken Bones



Eagle

# Standard Sizes

## STANDARD SIZES

- Standard sizing applies to Quick-Ship (pp. 4, 5) and Personalized Aprons (pp. 6, 7) only.
- If you don't fit our standard sizes, use our Perfect Fit™ sizing on p. 13.

### Front Protection Apron Size Chart

Size (Unisex)	Actual Apron Size (W x L)	Fits Dress Size	Fits Suit Size	Max Chest/Hip Measurement	Fits Max Height
S	20" x 32"	4 - 6	34" - 36"	34"	5'6"
M	22" x 34"	8 - 10	38" - 40"	38"	5'10"
L	24" x 36"	12 - 14	42" - 44"	42"	6'0"
XL	26" x 38"	16 - 18	46" - 48"	46"	6'2"
2XL	28" x 40"	20 - 22	50" - 52"	50"	6'4"

To measure apron length: Measure from sternal notch to hem (recommend 1" above the knee.)

### Coat Apron Size Chart

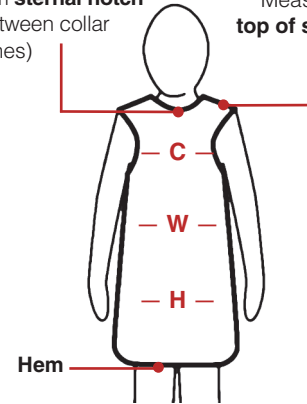
Size	Chest Size	Waist Size	Hip Size	Length
S	33" - 36"	34" - 37"	35" - 38"	36"/34"
M	37" - 40"	38" - 41"	39" - 42"	38"/36"
L	41" - 44"	42" - 45"	43" - 46"	40"/38"
XL	45" - 48"	46" - 49"	47" - 50"	42"/40"

Coat aprons larger than XL should be ordered with Perfect Fit Sizing. See pp. 22, 23.

## Measuring Landmarks

**Front Protection Aprons** measure from **sternal notch** (between collar bones)

**Coat and Vest/Kilt Aprons** Measure from **top of shoulder**



- **Chest:** Measure circumference around widest part of chest.
- **Waist:** **One-Piece** aprons—measure waistline. **Two-Piece** aprons—measure where you want the kilt top (it may or may not be your natural waist.)
- **Hip:** Measure circumference around the widest part of hips.
- **Hem:** We recommend 1" above knee.

### Front and Back Protection Apron Size Chart

Size	Male Vests		Female Vests		Waist Size	Kilts (unisex)	
	Chest Size	Vest Length*	Chest Size	Vest Length*		Hip Size	Kilt Length
S	34" - 36"	23.5"	33" - 34"	21"	26" - 30"	33" - 37"	19"
M	37" - 38"	24.5"	35" - 36"	21.5"	31" - 34"	38" - 41"	20"
L	39" - 42"	25.5"	37" - 38"	22"	35" - 38"	42" - 45"	21"
XL	43" - 46"	26.5"	39" - 40"	22.5"	39" - 43"	46" - 50"	22"

\*Note: Vest length includes a 2" overlap of kilt.

Front and back protection aprons larger than XL should be ordered with Perfect Fit Sizing. See pp. 12, 13.

# Need a tailored fit? Perfect Fit™ is for you!

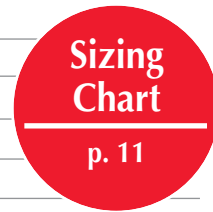


See p. 13!



# Personalized Apron Order Form (Standard Sizes)

Facility Name \_\_\_\_\_ Cust. # \_\_\_\_\_ P.O. # \_\_\_\_\_  
 Billing Address \_\_\_\_\_  
 City \_\_\_\_\_ State \_\_\_\_\_ Zip \_\_\_\_\_  
 Shipping Address (if different) \_\_\_\_\_



Phone # (\_\_\_\_) \_\_\_\_\_ Fax # (\_\_\_\_) \_\_\_\_\_ Email \_\_\_\_\_  
 Payment Type  Check Enclosed  MasterCard  VISA  AMEX  Discover Exp. Date \_\_\_\_\_  
 Card # \_\_\_\_\_ Signature \_\_\_\_\_  
 Ordered by (your name) \_\_\_\_\_  
 Ordered for (Dept. Name) \_\_\_\_\_

**Note: Personalized aprons are not returnable.**

Item #	Apron/Vest Kilt	Apron	Thyroid Shield								
	# _____ # _____		<input type="checkbox"/> Unattached # _____ <input type="checkbox"/> Attached (no # needed)								
<b>Product Name</b>			<input type="checkbox"/> Ultralight, Lead-Free <input type="checkbox"/> Lead-Free <input type="checkbox"/> Lightweight Lead <input type="checkbox"/> Standard Lead								
<b>Color:</b> See p 9.											
<b>Size: Vest</b>	<input type="checkbox"/> S <input type="checkbox"/> M <input type="checkbox"/> L <input type="checkbox"/> XL		One size								
<b>Kilt</b>	<input type="checkbox"/> S <input type="checkbox"/> M <input type="checkbox"/> L <input type="checkbox"/> XL										
<b>All other aprons</b>	<input type="checkbox"/> S <input type="checkbox"/> M <input type="checkbox"/> L <input type="checkbox"/> XL <input type="checkbox"/> 2XL*										
<b>Monogram (Free)</b> Name, department, initials, etc.	<input type="checkbox"/> Yes <input type="checkbox"/> No		<input type="checkbox"/> Yes <input type="checkbox"/> No								
<b>Lettering Style</b>											
<table border="1"> <tr> <td><i>FONT STYLE:</i></td> <td><i>EXAMPLES:</i></td> </tr> <tr> <td><b>Block</b></td> <td>Rick E. Barnes, M.D.</td> </tr> <tr> <td><b>ALL CAPS</b></td> <td>RICK E. BARNES, M.D.</td> </tr> <tr> <td><i>-Script</i></td> <td>Radiology Department</td> </tr> </table>	<i>FONT STYLE:</i>	<i>EXAMPLES:</i>	<b>Block</b>	Rick E. Barnes, M.D.	<b>ALL CAPS</b>	RICK E. BARNES, M.D.	<i>-Script</i>	Radiology Department	<input type="checkbox"/> Block <input type="checkbox"/> ALL CAPS <input type="checkbox"/> <i>Script</i>		<input type="checkbox"/> Block <input type="checkbox"/> ALL CAPS <input type="checkbox"/> <i>Script</i>
<i>FONT STYLE:</i>	<i>EXAMPLES:</i>										
<b>Block</b>	Rick E. Barnes, M.D.										
<b>ALL CAPS</b>	RICK E. BARNES, M.D.										
<i>-Script</i>	Radiology Department										
<b>Monogram: Line 1</b> Please print clearly	Max 16 Characters**		Max 10 Characters**								
<b>Monogram: Line 2</b> Please print clearly	Max 16 Characters**		n/a								
<b>Embroidery Design (\$20.50 ea)</b> See p. 10	<input type="checkbox"/> Yes <input type="checkbox"/> No Design _____		<input type="checkbox"/> Yes <input type="checkbox"/> No Design _____								

\* 2XL not available on Front/Back protection (Vest/Kilt, Reverse Vest/Kilt and Coat) aprons. Please use Perfect Fit sizing, p. 13, 14.  
 \*\* Number of characters includes spaces and periods.

<b>Apron/Vest</b>	\$ _____
<b>Kilt</b>	\$ _____
<b>Thyroid Shield</b>	\$ _____
<b>Monogram (See p. 10)</b>	\$ <b>FREE</b>
<b>Embroidery (\$20.50 ea, see p. 10)</b>	\$ _____
<b>Sales Tax†</b>	\$ _____
<b>Shipping</b>	\$ _____
<b>Total</b>	\$ _____
<b>Notes</b>	_____
Questions about your order? Call our Customer Care Team at 888-625-4633.	

**Fax completed order form to Customer Care: 800-437-2966**

†Tax: Applies to all orders shipped in MA (6.25%) and SC (6%). If you are tax exempt, please forward a copy of your tax exempt or resale certificate. If your facility is not in MA or SC, please submit use tax directly to your state.

Please allow 15 business days for shipment. Personalized aprons and shields are not returnable.

Order form available online at <http://aprons.alimed.info>



# Perfect Fit™ Sizing (order using form on p. 14)

## PERFECT FIT™ SIZING!



Best for the individual.  
Custom fitting at no extra charge!  
If you don't fit into our standard sizes or want something custom-fitted, we'll make it to your specifications.

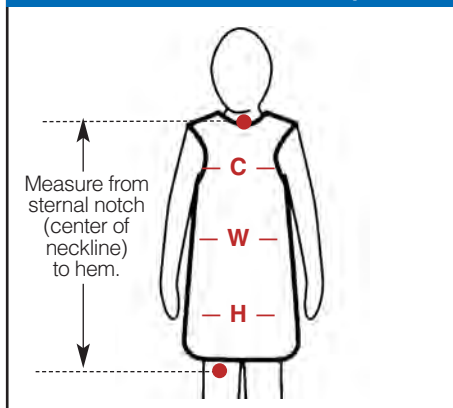


Read measuring tips below and order using the form on p. 14.

### Perfect Fit Measuring Landmarks

- Chest (C): Measure circumference around widest part of chest.
- Waist (W): **One-Piece**—measure waist.  
**Two-Piece**—measure where you want the kilt top (it may or may not be your natural waist.)
- Hip (H): Measure circumference around widest part of hips.
- Hem: We suggest 1" above the knee.

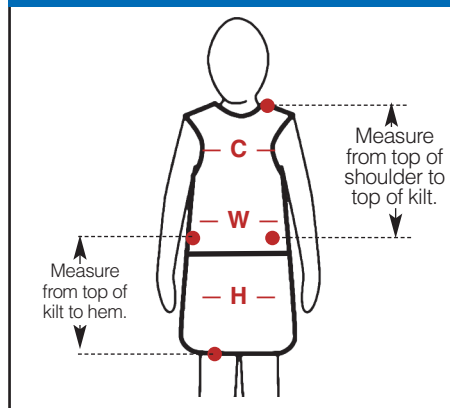
### All Front Protection Aprons



**Front Protection Apron Measurements**  
Measure length of apron from the sternal notch (center of collar bones) to the hem (suggest 1" above the knee). If you want your hem longer or shorter, adjust accordingly.

Measure chest, waist, and hips. See "Measuring Landmarks" above.

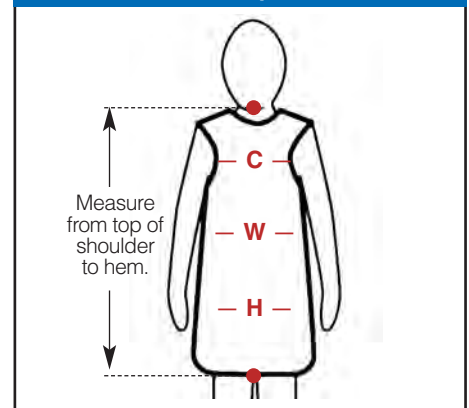
### Vest and Kilt Two-Piece



**Vest and Kilt Measurements** Try to find a kilt for comparison. Put it on where you want the top of the kilt to be. This may or may not be your natural waist. Measure from top of shoulder to top of kilt following contours of the body (go over chest area). On the order form, you will be prompted to add 2" so the vest overlaps the kilt. Measure from top of the kilt to the hem (typically 1" above knee). Adjust for longer or shorter hem.

Measure chest, waist, and hips. See "Measuring Landmarks" above.

### Coat Apron



**Coat Apron Measurements** Measure length of apron from top of shoulder to hem (suggest 1" above the knee). Be sure to follow the contour of the body (go over chest area). If you want your hem longer or shorter, adjust accordingly.

Measure chest, waist, and hips. See "Measuring Landmarks" above.

## THE ALIMED APRON SWAP PROGRAM **NEW!**

AliMed will dispose of your leaded apron for **FREE!** That's right, **FREE!**

Buy any AliMed Lead-Free Apron and you'll receive a coupon for **FREE** disposal of your leaded Apron. You pay only shipping costs.

### STAY GREEN!

By investing in a new lead-free apron, you'll be helping the environment by decreasing the amount of harmful materials that need to be disposed of in the future.

### HOW IT WORKS:

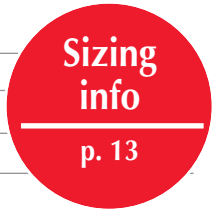
1. Place an order for any style of AliMed Light or Ultralight Lead-Free Aprons. (Choose from three lines of aprons—Quick Ship, Personalized, or Perfect Fit™.)
2. Your Apron Swap Coupon will arrive with your new apron (attached to the outside of the apron box).
3. Ship your leaded apron to our Disposal Facility along with your Coupon. Detailed instructions will be on the Apron Swap Coupon.

We take back ANY manufacturer's apron



**Offer Details:** Customer will receive a coupon for the disposal of one leaded apron for each eligible apron purchased from AliMed. For new apron orders only; not eligible for past orders. Valid on AliMed aprons only. Thyroid Shields not applicable. Customer is responsible for shipping fees to our disposal facility.

# Perfect Fit™ Apron Order Form



Facility Name \_\_\_\_\_ Cust. # \_\_\_\_\_ P.O. # \_\_\_\_\_  
 Billing Address \_\_\_\_\_  
 City \_\_\_\_\_ State \_\_\_\_\_ Zip \_\_\_\_\_  
 Shipping Address (if different) \_\_\_\_\_

Phone # (\_\_\_\_) \_\_\_\_\_ Fax # (\_\_\_\_) \_\_\_\_\_ Email \_\_\_\_\_  
 Payment Type  Check Enclosed  MasterCard  VISA  AMEX  Discover Exp. Date \_\_\_\_\_  
 Card # \_\_\_\_\_ Signature \_\_\_\_\_

Ordered by (your name) \_\_\_\_\_  
 Ordered for (Dept. name) \_\_\_\_\_

**Note: Perfect Fit aprons are not returnable.**

Item #	Apron	Thyroid Shield
Apron/Vest # _____ Kilt # _____	<input type="checkbox"/> Unattached # _____ <input type="checkbox"/> Attached (no # needed)	
<b>Product Name</b>	<input type="checkbox"/> Ultralight, Lead-Free <input type="checkbox"/> Lead-Free <input type="checkbox"/> Lightweight Lead <input type="checkbox"/> Standard Lead	
<b>Color:</b> See p. 9.		
<b>Perfect Fit Sizing</b>	<b>Complete sizing at right</b> →	
<b>Monogram (Free)</b> Name, department, initials, etc.	<input type="checkbox"/> Yes <input type="checkbox"/> No	<input type="checkbox"/> Yes <input type="checkbox"/> No
<b>Lettering Style</b>	<input type="checkbox"/> Block <input type="checkbox"/> ALL CAPS <input type="checkbox"/> Script	<input type="checkbox"/> Block <input type="checkbox"/> ALL CAPS <input type="checkbox"/> Script
<b>Monogram: Line 1</b> Please print clearly	Max 16 Characters*	Max 10 Characters*
<b>Monogram: Line 2</b> Please print clearly	Max 16 Characters*	n/a
<b>Embroidery Design</b> (\$20.50 ea) See p. 10	<input type="checkbox"/> Yes <input type="checkbox"/> No Design _____	<input type="checkbox"/> Yes <input type="checkbox"/> No Design _____

## Perfect Fit —Your Measurements

See detailed measuring instructions on p. 13.

- Chest:** \_\_\_\_\_"  
Measure circumference around widest part of chest.
- Waist:** \_\_\_\_\_"  
**One-Piece** aprons—measure waistline.  
**Two-Piece** aprons—measure where you want the kilt top to sit (it may not be your natural waist.)
- Hip:** \_\_\_\_\_"  
Measure circumference around widest part of hips.
- Length/Hem:** We recommend hem to be 1" above the knee. \_\_\_\_\_"  
**Front Protection:** \_\_\_\_\_"  
Measure from the sternal notch to hem.  
**Vest:** \_\_\_\_\_" + 2" = \_\_\_\_\_"  
Measure top of shoulder to top of Kilt). **Add 2" for overlap.**  
**Kilt:** \_\_\_\_\_"  
Measure where you want the kilt top to sit (it may not be your natural waist) to the hem.  
**Coat:** \_\_\_\_\_"  
Measure from the top of the shoulder to the hem.

\*Number of characters includes spaces and periods.

<b>Apron/Vest</b>	\$ _____	<b>Fax completed order form to Customer Care: 800-437-2966</b> <small>†Tax: Applies to all orders shipped in MA (6.25%) and SC (6%). If you are tax exempt, please forward a copy of your tax exempt or resale certificate. If your facility is not in MA or SC, please submit use tax directly to your state.</small> <small>Please allow 15 business days for shipment. Perfect Fit™ aprons and shields are not returnable.</small>
<b>Kilt</b>	\$ _____	
<b>Thyroid Shield</b>	\$ _____	
<b>Monogram</b> (See p. 10)	\$ <b>FREE</b>	
<b>Embroidery</b> (\$20.50 ea, see p. 10)	\$ _____	
<b>Sales Tax</b> †	\$ _____	
<b>Shipping</b>	\$ _____	
<b>Total</b>	\$ _____	
<b>Notes</b> _____		

Questions about your order?  
 Call our Customer Care Team at 888-625-4633.

Order form also available online at <http://aprons.alimed.info>