

Supports up to 1,200 lbs.

Bariatric Bed Pans Unlike traditional bed pans, this low-profile pan is ideal for heavier patients because it slides easily underneath the patient for better comfort and easy placement and removal. 2-quart carrying capacity reduces spill and splash hazards.

14¼"W x 15"L x 3"H • ½"H rim at lowest edge
• 2-qt. capacity • Weight capacity certified to 1,200 lbs. • Autoclavable or wash with soap and water

#71 1255 BARIATRIC BED PAN

#71 125520 20/cs

Oversized



Help maintain hip precautions

HipMode™ Bariatric Commodes

10° forward slope helps reduce risk of hip replacement dislocation by allowing greater hip extension. Extra wide for comfort and support for larger patients and to accommodate wound dressings, etc. Sturdy steel-frame construction with extra-wide seat.

Seat: 17"W x 21"D • Opening: 8½"W x 12"D • Seat height: 19"-23" • Width between arms: 23" (front), 17½" (rear) • Front of seat to backrest: 22"D • 1" Tuff-Coat® steel tubular frame • 500-lb. capacity • 17 lbs.

#71 2488

Oversized



drive

High weight capacity, folds for storage, extra width

Bariatric Folding Commodes Pail and cover. Deeper seat depth.

31¾"W x 15½"-22"H • Seat: 13¾"W x 16½"D • Width between arms: 24" • Plastic armrests • Assembled • 12-qt. pail included • 650-lb. capacity • 19 lbs. • Limited lifetime warranty

#70197* BARIATRIC

#75 5622** 2/cs

*Additional freight charges apply if shipped by air.

**Oversized



drive

Oversized bench seat

Heavy-Duty Drop-Arm Commodes have a 1,000-lb. capacity. Drop-arm mechanism for safe transfers. Padded seat, back, and arms for comfort. Includes commode bucket and cover.

40"W x 21"H • Seat: 36"W x 21"D • Opening: 8½"W x 12"D • Width between arms: 36½" • Steel • 1,000-lb. capacity • 49 lbs. • Limited lifetime warranty

#77819

Oversized



Bigger, stronger toilet seat

Big John Commode Chairs Comfortable toileting option with oversized toilet seat for plus-sized patients. Perfect for bedside use or use over toilets for a height boost as needed. Stabilizing handles for easy transfers. Folds for easy storage and transport. Includes sanitary container and Big John Standard toilet seat.

Adjustable height: 19"-23" • Sturdy metal construction • Non-slip rubber feet • Easy installation in minutes • 800-lb capacity

#71 3580



For hygiene independence

Self Wipe® Maintain your hygiene and your privacy. Easier than tongs. Press the release button on the end of the handle to discard the tissue.

14¾"L

#82238 SELF WIPE

#82 23805 5/cs

#82 23810 10/cs



Faster cleanup

CareBag® Bedpan Liners with super absorbent pads save time and costs of handling, cleaning, and disinfecting bed pans. Helps reduce the spread of infection such as *Clostridium difficile*, Norovirus, and VRE. Pad turns waste into gel in seconds. Odor is suppressed once green-friendly liner is sealed. Fits all bed pan sizes and shapes. 20 liners/bx.

5-year shelf life • Liner: 24"W x 15"L with draw-string pull ties • Pad: 5½"W x 9¾"L • 16-oz. absorption capacity

#71 2745 BEDPAN LINER

#71 274518 18 bx/cs



24-oz. capacity

Sani-Bag+™ Biodegradable Commode Liners help reduce the spread of infection. Waste is immediately gelled and odor-neutralized. Liners good for three to five uses.

18" diameter • 24-oz. capacity

#79712 12/pk

#79713 24/pk

#79714 100/pk

#79715* 200/pk

*Oversized



Drawstring pull ties for easy disposal

CareBag® Commode Liners with super absorbent pads keep commode pails from getting soiled, saving cleanup time. Helps reduce the spread of infection such as *Clostridium difficile*, Norovirus, and VRE. Pad turns waste into gel in seconds. Odor is suppressed once green-friendly liner is sealed. Fits all standard commode pails. 20 liners/box.

5-year shelf life • Liner: 20½"W x 15¾"L with draw-string pull ties • Pad: 5½"W x 9¾"L • 16-oz. absorption capacity

#71 2698 20/bx

#71 269818 18 bx/cs

Shower Aids

Easy to maneuver

Extra-Wide Shower/Commodes with removable, padded seat back and padded seat and arms. Larger rear wheels for easier transport. Swing-away footrests. **Commode Pail** sold separately below.

Overall: 30"W or 34"W x 34"H x 35"D • Seat: 22"W or 26"W x 21"H x 20"D • Back height from seat: 15" • Seat clearance over toilet: 19½"H • 6" front casters • Stainless steel • 600-lb. capacity • 77 lbs. • 6-month warranty on parts, 5 years on frame

#8678* 22"W

#8679* 26"W

#77266 7-QT. COMMODE PAIL

*Oversized



Fits over toilet

ConvaQuip Transport Shower Chairs

A full 29" between arms fits very large patients with room for bathing. Fits over 19" commodes. Optional **Safety Belt** also available.

Overall: 29"W x 35½"H x 21"D • Seat: 21"H x 16"D • Width between arms: 26" • Perineal opening: 8"W x 10"D • 1" anodized aluminum tubing with ⅜" inner liner • Rear-locking casters • 650-lb. capacity • 28 lbs.

#78402 w/BENCH SEAT

#8668 w/STANDARD SEAT

#78401 STANDARD SEAT w/PAIL

#78409 OPTIONAL SAFETY BELT

#78371 REPL. PAIL

Oversized



Standard Seat w/Pail



Bench Seat

HEALTHLINE

High weight capacity

Bariatric Reclining Shower Commodes

Five-position backrest and leg rest. Includes safety belt.

Overall: 24"W x 54½"H x 39½"D • Internal width: 21" • Seat to floor: 23½" • 4" non-rust casters (2 locking) • Includes footrest • 450-lb. capacity • 7-qt. pail included

#72266

Specify Blue or Mauve (not shown). Ships freight.



drive

Reinforced frame

Deluxe Bariatric Bath Benches

Drainage holes in seat reduce slipping.

Overall: 17½"W x 17¼"D • Seat: 20"W x 12"D • Seat height 14"-21" • 7.5 lbs. w/Back; 6 lbs. w/o Back • Rust-proof • Removable back • Aluminum frame • 500-lb. capacity • Limited lifetime warranty

#71923 w/BACK

#71924 w/o BACK

Oversized



Identify weight capacity at a glance

Standardized Equipment Weight Capacity Labels give quick recognition of the weight capacity of equipment, while maintaining patient dignity. These labels help facilities meet the criteria for SRC Centers of Excellence for Bariatric Centers.* These 1½" x 1½" vinyl labels are printed in large type that can be easily seen from 6-8 feet away. Patient dignity is improved by subtly stating the weight capacity; 400-lb. capacity label shows an image of a bird and the number 40. Labels can be safely adhered to flat or curved surfaces on the following materials: **Wood:** Chairs, crutches, rehabilitation treatment tables, etc. **Metal:** Wheelchairs, walkers, canes, patient lifts, etc. **Plastic:** Patient shifters, transfer boards, etc. **Vinyl:** Wheelchairs, geri-chairs, etc. **Can be sprayed and wiped with disinfectant.** 175/pk—25 ea of 30, 40, 50, 60, 70, 80, 100.

#71 1511

*Surgical Review Corporation (SRC) requires that facilities have equipment available for morbidly obese patients and that all staff members can easily recognize the weight capacity for each piece of equipment.



Multiply number by 10—up to 1,000 lb.-capacity



Bed Safety



Rail extends to floor for greater support

Mounts to frame

Bariatric Bed Handles mount directly to bed frame (metal bed frame required) for extra support and safety. Top of handle is approximately 23" above the mattress. Tool-free setup.

11½"W • 600-lb. capacity • Made in USA

#8639

Additional freight charges apply if shipped by air.



Folds and locks

Adjusts 18"-22"H



For spring- or pan-style beds

Transfer Handle Plus is a security bed handle designed to easily attach on either spring- or pan-based hospital-style beds. **Single-Handle** or **Double-Handle** models. Meets FDA guidelines.

Adjustable height: 18"-22" in 1" increments • Locks at 45°, 90°, and 180° in either direction • Outside width: 5½" • Inside width: 3½" • Adjustable wrench required • 600-lb. capacity • Made in USA

#71 2423 SINGLE

#71 2424* DOUBLE

*Additional freight charges apply if shipped by air.

Furnishings



Oversized, 40"L

Bariatric Overbed Tables Oversized faux-cherry laminate tabletop with vinyl edge molding measures 18"W x 40"L to reach the center of most bariatric beds. Tabletop height can be raised or lowered between 28"-45" in 1" increments. Steel-welded frame and H-shaped base provide security and stability. Tabletop locks securely in place when height-adjustment handle is released. Table can be easily raised with slight upward pressure. Swivel casters provide easy maneuverability.

Adjustable height: 28"-45" • Tabletop: 18"W x 40"L • Steel-welded column w/H-shaped base • 1½" diam. swivel casters • 500-lb. capacity • Limited lifetime warranty

#71938

Oversized



w/o Handrail

w/Handrail



Anti-tip wide base

Bariatric XL Safe Step Footstools All-aluminum welded construction with powder-coat silver-tone finish. Anti-tip wide base with angled rubber leg tips. Anti-slip extra-large platform. Model without handrail is MRI-safe.

Platform: 15"W x 19"L x 8"H • Base: 25"L x 20"W • 1,000-lb. capacity • Without Handrail: 6½ lbs. • With Handrail: 36"H • 10½ lbs.

#71 1505 w/o HANDRAIL

#71 1504 w/HANDRAIL

Oversized

Heel Suspension Boots



■ Cooling gel insert

Original Heel-Float™ floats heel and helps protect malleoli, foot, and lower leg while helping to prevent footdrop. Cooling gel insert. Cozy Cloth™ cover reduces shear and friction on bed sheets. Cloth barrier between straps and skin eliminate irritation at shin. Adjustable straps. Reusable, washable.

#50 3036



■ Smooth interior helps minimize skin irritation

Heelift® Suspension Boots fully suspend heel using adjustable elevation pad, dispersing pressure over calf. Medical-grade foam. Smooth interior helps minimize skin irritation for extra-sensitive skin. Exterior fabric covering along back of leg moves easily on bed linens to aid in patient mobility. Air holes offer added ventilation. Two adjustable hook-and-loop straps.

Calf circumference: 12"-23" • 250-to 600-lb. capacity
• Machine-washable in net laundry bag (not included)

#66017 SUSPENSION BOOT
#66 01706* 6/cs

*Additional freight charges apply if shipped by air.



Smooth interior



■ Draw moisture away from skin

Bariatric Elevation Boots Heel is elevated by multiple layers of Vento Air fabric (a three-layer laminate with soft hydrophilic fabric top and bottom) underneath the calf. Readily wick away moisture while cushioning and promoting air circulation to help avoid skin maceration. Open heel promotes airflow and allows visualization of heel. Soft nylon exterior slides smoothly over bedsheets. Adjustable straps are soft against skin while **Footdrop Strap** aids in positioning. **Offloading Boot** relieves pressure on calf and ankle. Nonslip bottom. Not made with natural rubber latex.

Calf circumference: 20" • Boot height: 9"

#66514 ELEVATION BOOT w/FOOTDROP STRAP
#66516 OFFLOADING BOOT

Suggested code: A9283



Elevation Boot w/Footdrop Strap



Heel and Ankle Offloading Boot



■ Contains sanitized AG antimicrobial agent



Heel-Up Foot Positioners cradle foot and ankle while suspending heel for pressure relief. Foam cushioning protects calf, shin, malleoli, and forefoot areas. Distal end of calf pad is tapered to protect fragile Achilles area. Heel window allows air circulation and easy inspection.

Skin-friendly microsuede interior contains Sanitized® AG antimicrobial agent. Low-friction nylon exterior facilitates bed mobility and slides easily on bed linens to help maintain proper position. Water-resistant fabric is durable and machine-washable. Fits left or right.

Calf circumference: up to 23" • Width at heel: 5"

#65949 HEEL-UP
#65 94906 6/cs

Patient Transfer

■ Ergonomic hand holes— for up to 600 lbs.

Bariatric Shifters Best option for lateral transfers of patients up to 600 lbs. Reduce caregiver back strain by minimizing friction on transfer services. Elongated hand-holds for secure grip. Flexible plastic is great for uneven services. We recommend using one caregiver per 100 lbs.

38"W x 72"L x 3/16" thick • 600-lb. capacity • Clean with hospital-approved disinfectant • Purple

#93 5944

Ships freight.



■ Available in two lengths



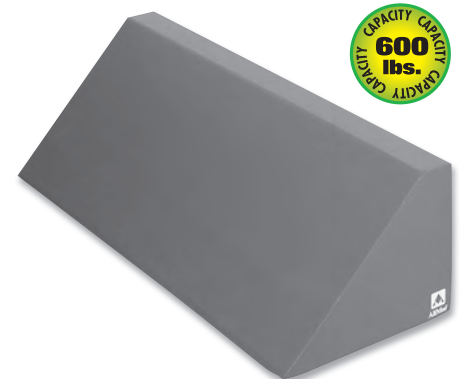
Bariatric Bed Wedges are made with a higher-density foam to resist compression from larger patients. Choose between two sizes: **28\"/>**

8\"/>

#82959* 28\"/>

#82958 14\"/>

*Additional freight charges apply if shipped by air.



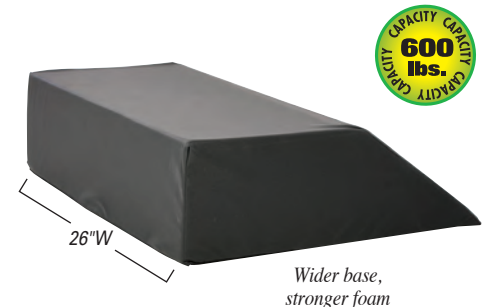
■ Extra wide base

Bariatric Bed Wedges Wider than standard positioners to accommodate different size and weight-bearing specifications. Specially formulated foam comfortably supports, but reduces compression to prevent bottoming out.

26\"/>

#82956

Oversized



Wider base, stronger foam

Rollators



■ For your heaviest patients

Bariatric Rollators

Constructed of Tuff-Coat® steel tubing, 8" swivel casters with brake in front and 8" wheels in rear. Auto-retracting seat. Easy-operating hand brakes. Dual safety releasing pin for folding. Angled front legs ensure stability. Double-tube crossbraces and side leg braces for added safety.

29¼"W x 24"D • Adjustable height: 33"-38" • Seat height: 22" • Seat width: 19¼" • Depth folded: 6¼" • 700-lb. capacity • 30½" lbs. • Black

#71 1978

Oversized



Shown folded



drive

■ Push-down brakes—ideal for patients with limited hand function

Bariatric Safety Rollers Ideal for patients with limited hand function and/or limited cognizance. Applying pressure to handlebar activates braking mechanism. Skid-resistant, non-marring neoprene wheels. Appropriate for both indoor and outdoor use.

25"D • Adjustable width: 24"-30" • Adjustable height: 29"-36" • 1,000-lb. capacity • 29 lbs.

#80711

Specify Black, Burgundy, or Red.

Oversized



Adjustable width up to 30"



■ Durable versatility for larger patients

Bariatric Rollators Heavy-duty steel construction with wide, deep frame for durability. Removable backrest and flip-up seat make it easy to fold for storage and transport. 7½" casters and 8" wheels provide added mobility. Height-adjustable handbrakes accommodate wide range of users.

27"W x 29½"D • Seat: 18"W x 14"D • Seat-to-floor: 22"H • Basket included • 500-lb. capacity • 26 lbs. • Deep Blue

#71 3279



AliMed® Inc.

297 High Street, Dedham, MA 02026

Toll-Free: 800.225.2610 (phone)

800.437.2966 (fax)

International: 1.781.329.2900 (phone)

1.781.329.8392 (fax)

8:30AM-6PM EST Mon.-Fri.

EDI capabilities/GHX Partner
customerservice@AliMed.com

Publication #7531 Product #11401

©2018 AliMed® Inc. All rights reserved.
Printed in the USA.

MINIMUM BILLING International orders (except Canada) require a \$300.00 (U.S.) minimum order.

TERMS Net 15 to established accounts. Credit card payments are only accepted at time of order entry. **All prices F.O.B. shipping point.** Shipment made at prevailing price at time of order. All prices in U.S. currency. Prices are professional wholesale. Patient may order directly; retail pricing applies. Prices, availability, and specs subject to change. Visit AliMed.com for the most current pricing. Items may be discontinued at any time. AliMed reserves the right to substitute similar products to those

shown in catalogs at any time. No part may be reproduced without written permission. Overdue accounts are subject to a late-payment fee of 2.0% per month, resulting in an annual rate of 24%. A \$25.00 fee will be charged for returned checks.

CREDIT CARDS We accept the following:



VOLUME DISCOUNTS Item numbers, sizes, colors, lefts and rights, etc. cannot be assorted for a volume discount. One item #, one style per volume discount order (unless otherwise specified).

SHIPPING We ship FedEx/UPS whenever possible. Some small packages may be sent via USPS. Charges are calculated at time of order and are prepaid and added to invoice. Freight shipments are freight collect. Shipping quotes available by phone upon request. COD orders are not available. Collect shipments are subject to a \$7.50 processing fee per order and can only be processed when items are shipped direct from AliMed's warehouse. Any items shipped from an alternate site will have charges prepaid and added to the invoice. Shipments to HI, AK, and Puerto Rico are sent by 2nd Day Air unless otherwise requested. Shipments to Canada

may incur additional charges, without limitation, duties, taxes, or country-specific fees. International Shipments (except Canada) require a freight quote. Contact our International Department for a quote.

OVERSIZED ITEMS Subject to additional freight charges. Applies to all orders with oversized items, including contract orders, items with free ground shipping, and free shipping promotions.

HAZARDOUS ITEMS Must ship ground and each item is subject to a \$25.00 handling fee.

TRUCK SHIPMENTS
Delivery Inspection Required

IMPORTANT NOTICE Products are delivered to your receiving dock. Inside delivery and/or liftgate services can be arranged for additional charges. All truck shipments must be fully inspected by receiver before signing for the delivery to ensure there is no concealed damage. If you cannot inspect immediately, make a note "pending inspection" with your signature. Any damaged shipment received should be refused by the receiver. These guidelines must be strictly followed in order to receive any credit on shipments made by truck.

OVERNIGHT TRUCK SHIPMENTS AliMed does NOT provide overnight delivery on orders that require delivery by truck.

Walkers



■ Extra stability

Heavy-Duty Folding Walkers Double-tube cross brace and side leg braces for extra stability. Dual-release pin for easy folding. Will fit over toilet.

26½"W x 20"D • Adjustable height: 30"-40" • 700-lb. capacity • 10 lbs.

Heavy-Duty Walker Wheels (Not shown). Optional dual 5" front casters and dual 2" rear swivel casters with brake.

#75709* WALKER

#75711 WHEELS

*Additional charges apply if shipped by air.



Fits over toilet

■ 850-lb. capacity

Rigid Bariatric Walkers Non-folding design offers extra rigidity for use where space is not an issue. Durable 1" aluminum tubing for maximum strength.

28"W x 22"D • Adjustable height: 33"-36" • 850-lb. capacity • 12 lbs.

#74870* WALKER

#8427 BASKET, 16"W x 5½"L x 7"H (NOT SHOWN)

*Oversized



Highest weight capacity at lowest cost

drive

■ 500-lb. capacity

Bariatric Walker Platform Attachments

Cradles forearm with soft vinyl padding. Large top bracket allows platform attachment to be placed over walker handgrip. Adjustable strap secures arm in place.

500-lb. capacity (for attachment and walker)

• Limited lifetime warranty

#70586



Adjustable strap secures the arm

■ Extend belt by 12"

Bariatric Seatbelt Extenders Attach to seatbelt to extend any belt length by 12". For quick and easy, tool-free seatbelt attachment, use the **UniLoop** to attach a belt to a standard chair, geri-chair, or wheelchair's back.

#79205 SEATBELT EXTENDER

#77716 UNILOOP



12" Seatbelt Extender

UniLoop

Same-day shipping—
order by 3PM EST

You asked...
We listened!

- ✓ Expedited delivery options
- ✓ APO shipping
- ✓ No minimum order requirements (excludes international orders)

Still have questions?
Call 800.225.2610

Place your order
before 3PM EST—
if in stock,
it ships the same day!

Contract Pricing Bids:
quotes@AliMed.com