

Safeguard patients from line pulling or self-injury

- Limit unwanted finger and hand movements
- Quick and easy visual inspection
- Available in see-through mesh or easy-view styles



Soft Hand Guard Mitt
Mesh promotes air circulation



Padded Easy-View Mitt
Flaps permit visual inspection without removing restraints

AliMed Protective Mitts

Designed to help prevent patients from disrupting medical treatment such as pulling IV lines, tubes, and catheters, or for those who are prone to self-injury. Both styles offer quick and easy visual inspection of hand circulation. Sold in pairs.

Soft Hand Guard Mitts feature blue mesh back and front to promote air circulation. Includes hook-and-loop wrist closures.

Padded Easy-View Mitts feature double-padded flaps and 48"L restraint straps to help limit self-injury.

Cotton/polyester/polyester fiber fill • One size fits most adults • Fits left or right hand, no finger separators • Machine-washable • Available by prescription only

Ordering Information

- #2970009004 Soft Hand Guard Mitts, pair
- #2970009005 Padded Easy-View Mitts, pair

MD • 65 California residents, see below.

See reverse for fastening instructions.

California Proposition 65 Statement

65 **WARNING:** This product can expose you to chemicals including Di(2-Ethylhexyl) Phthalate (DEHP), which is known to the State of California to cause cancer and birth defects or other reproductive harm. For more information go to <https://www.p65warnings.ca.gov>.



Fastening for Soft Hand Guard Mitts

1. Wrap the wrist strap around the smallest part of the patient's wrist, through the plastic ring, and secure with the hook-and-loop fastener.
2. Slide one finger (flat) between the device and the inside of the patient's wrist to ensure proper fit. The strap must be snug but not restrict circulation.

Ordering Information

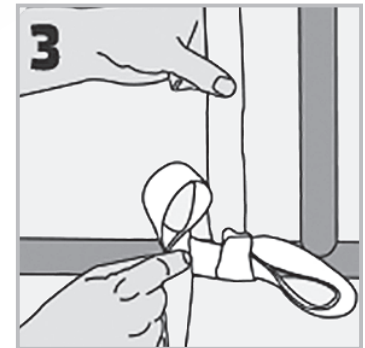
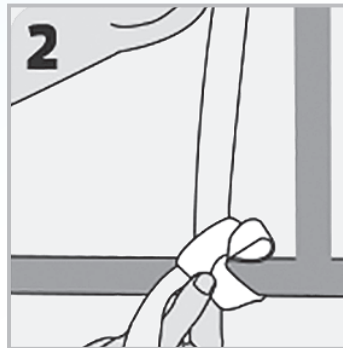
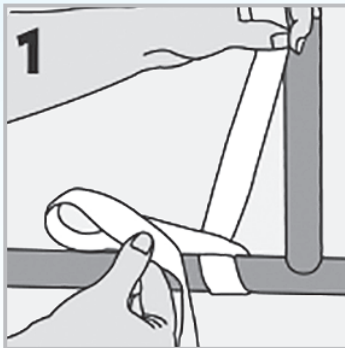
#2970009004 Soft Hand Guard Mitts, pair

Cotton/polyester/polyester fiber fill • One size fits most adults • Fits left or right hand, no finger separators • Machine-washable • Available by prescription only

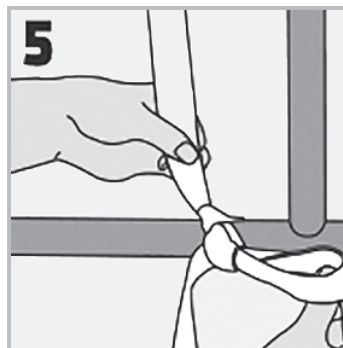
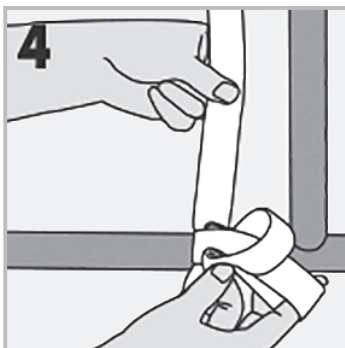
MD • 65 California residents, see below.



Quick-Release Tie for Padded Easy-View Mitts



1. Wrap the strap once around a movable part of the bed frame to ensure the strap moves with the patient when bed is adjusted, leaving at least an 8" (20 cm) tail. Fold the loose end of the strap in half to create a loop and cross it over the other end.
2. Insert the folded strap where the straps cross over each other, as if tying a shoelace. Pull on the loop to tighten.
3. Fold the loose end in half to create a second loop.



4. Insert the second loop into the first loop.
5. Pull on the loop to tighten. Test to make sure the strap is secure and will not slide in any direction. Repeat on the other side. Practice quick-release ties to ensure the knot releases with one pull on the loose end of the strap.

Ordering Information

#2970009005 Padded Easy-View Mitts, pair

Cotton/polyester/polyester fiber fill • One size fits most adults • Fits left or right hand, no finger separators • Machine-washable • Available by prescription only

MD • 65 California residents, see below.

Any order placed before 3 p.m. EST, if in stock, ships the same day!
Prices, product availability, and specs are subject to change.

California Proposition 65 Statement
65 **WARNING:** This product can expose you to chemicals including Di(2-Ethylhexyl) Phthalate (DEHP), which is known to the State of California to cause cancer and birth defects or other reproductive harm. For more information go to <https://www.p65warnings.ca.gov>.

Pub. #7511REV0324

©2024 AliMed® Inc. All rights reserved.