

### Meeting the everyday needs of your bariatric patients

With a full line of appropriately sized, high-capacity solutions constructed with durable, reinforced materials, **AliMed's Bariatric Products** are designed to help facilitate safer handling, enhance the quality of care, and improve outcomes for larger patients while reducing safety risks for both patients and caregivers.

#### Table of Contents

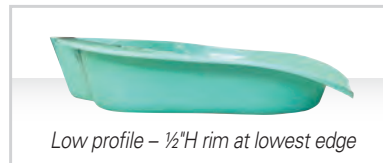
Wheelchair Cushions	2
Patient Positioners	2
Wheelchairs	3
Wheelchair Accessories	3
Mobility Aids	4
Beds & Accessories	4
Skin Protection	4
Safe Patient Handling	5
Orthopedic Bracing	5
Bathing & Toileting	6
Patient Safety	6
Clinical Furniture	7
O.R. Accessories	8
Patient Straps	8
Post-Op Accessories	8
Imaging	8
Diagnostics	8



Visit [AliMed.com](http://AliMed.com) for a full range of products, from Pediatrics to Bariatrics.

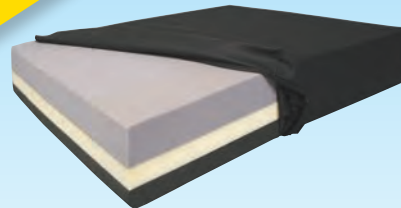
# Durable. Heavy duty. High-weight capacity.

### EASIER INSERTION!



**Bariatric Bed Pans** p. 6

### WON'T BOTTOM OUT!



**Bariatric Tri-Foam Wheelchair Cushions** p. 2

### REINFORCED FRAME!



**Heavy-Duty Wheelchairs** p. 3

### 1,000-LB. CAPACITY!



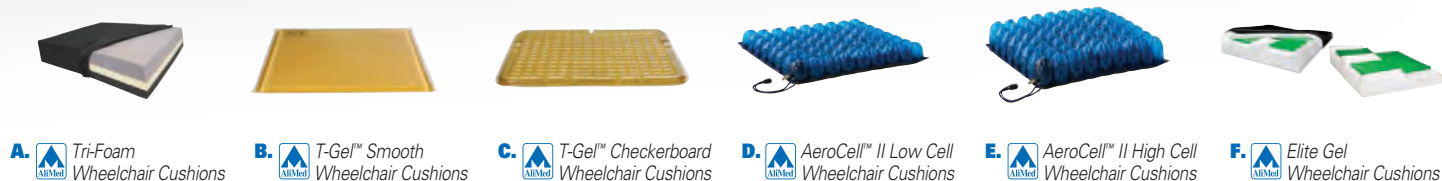
**MegaMover® Portable Transport Units** p. 5

### EXTRA-LARGE MID-PANEL!

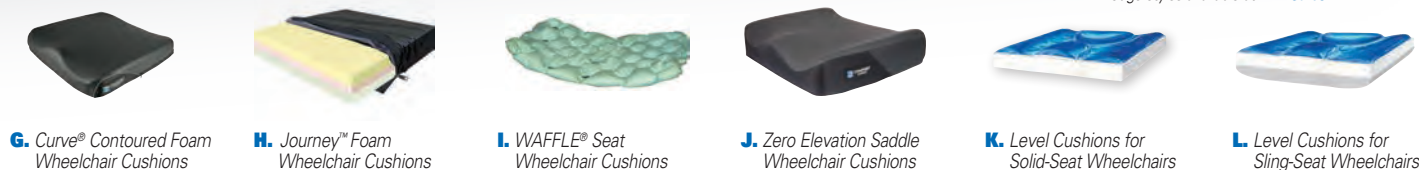


**VeriClean™ Bariatric O.R. Table Straps** p. 8

## Wheelchair Cushions



**A.** Tri-Foam Wheelchair Cushions  
**B.** T-Gel™ Smooth Wheelchair Cushions  
**C.** T-Gel™ Checkerboard Wheelchair Cushions  
**D.** AeroCell™ II Low Cell Wheelchair Cushions  
**E.** AeroCell™ II High Cell Wheelchair Cushions  
**F.** Elite Gel Wheelchair Cushions



**G.** Curve® Contoured Foam Wheelchair Cushions  
**H.** Journey™ Foam Wheelchair Cushions  
**I.** WAFFLE® Seat Wheelchair Cushions  
**J.** Zero Elevation Saddle Wheelchair Cushions  
**K.** Level Cushions for Solid-Seat Wheelchairs  
**L.** Level Cushions for Sling-Seat Wheelchairs

Wedge styles available at [AliMed.com](http://AliMed.com)

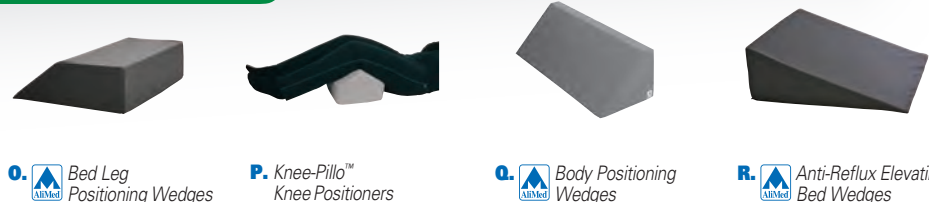


**M.** Bari-Foam Wheelchair Cushions



**N.** Uplift Seat Assist™ Lifting Cushions

## Patient Positioners



**O.** Bed Leg Positioning Wedges  
**P.** Knee-Pillo™ Knee Positioners  
**Q.** Body Positioning Wedges  
**R.** Anti-Reflux Elevating Bed Wedges



**S.** PopitzPillow Supine Sniff Positioners



**T.** Bean Bag Positioners with Shoulder Cutout



**U.** Sandbag Positioning Sets



**V.** Surgical Thyroid Pillows



**W.** Protecta-Coat™ Knee Bolsters



**X.** InvisiCoat™ Plus Wedge Positioners

Wheelchair Cushions	Item #	Wt. Cap. / Size
<b>A.</b> Tri-Foam WC Cushion Sizes: 20"×30"W • Search #11074 at <a href="http://AliMed.com">AliMed.com</a>	See at left	1,000
<b>B.</b> T-Gel Smooth WC Cushion, Blue or Black Cover Sizes: 16"×20"W • Search #1530 at <a href="http://AliMed.com">AliMed.com</a>	See at left	—
<b>C.</b> T-Gel Checkerboard WC Cushion, Blue or Black Cover Sizes: 16"×20"W • Search #10882 at <a href="http://AliMed.com">AliMed.com</a>	See at left	—
<b>D.</b> AeroCell II Low Cell WC Cushion, Single or Dual Valve Sizes: 16"×20"W • Search #10727 at <a href="http://AliMed.com">AliMed.com</a>	See at left	400
<b>E.</b> AeroCell II High Cell WC Cushion, Single or Dual Valve Sizes: 16"×20"W • Search #11074 at <a href="http://AliMed.com">AliMed.com</a>	See at left	400
<b>F.</b> Elite Gel WC Cushion, with or without Anti-Thrust Sizes: 16"×24"W • Search #1420 at <a href="http://AliMed.com">AliMed.com</a>	See at left	350
<b>G.</b> Curve Contoured Foam WC Cushion Size: 22"W • Stretch-Air Cover	#11477	400
Curve Contoured Foam WC Cushion Size: 24"W • Stretch-Air Cover	#11478	400
<b>H.</b> Journey Foam WC Cushion Sizes: 20"×30"W • Search #10017 at <a href="http://AliMed.com">AliMed.com</a>	See at left	3"H: 500 4"H: 650
<b>I.</b> WAFFLE Seat WC Cushion Size: 28"W • Easy to clean, no cover included	#10866	700
Air Pump for #10866 (required), 2/pk	#66223	—
<b>J.</b> Zero Elevation Saddle WC Cushion w/Molded Foam Sizes: 22"×26"W • Search #11479 at <a href="http://AliMed.com">AliMed.com</a>	See at left	400
Zero Elevation Saddle WC Cushion w/QuadraGel Sizes: 22"×26"W • Search #11484 at <a href="http://AliMed.com">AliMed.com</a>	See at left	400
<b>K.</b> Level Cushion for Solid-Seat Wheelchair Sizes: 24"×28"W • Search #1373 at <a href="http://AliMed.com">AliMed.com</a>	See at left	500
<b>L.</b> Level Cushion for Sling-Seat Wheelchair Sizes: 24"×28"W • Search #1371 at <a href="http://AliMed.com">AliMed.com</a>	See at left	500

<b>M.</b> Bari-Foam WC Cushion, Contoured or Flat Bottom Sizes: 22"W×28"W • Search #754814 at <a href="http://AliMed.com">AliMed.com</a>	See at left	350
<b>N.</b> Uplift Seat Assist Lifting Cushion, Plus, 17"W x 19"D	#1961	350

Patient Positioners	Item #	Wt. Cap. / Size
<b>O.</b> Bed Leg Positioning Wedge, 26"W x 25"L x 12"H	#82956	650
<b>P.</b> Knee-Pillo Knee Positioner, 26"W x 17"L x 7"H	#82957	—
<b>Q.</b> Body Positioning Wedge, 10"W x 14"L x 8"H, Half Size	#82958	600
Body Positioning Wedge, 10"W x 28"L x 8"H, Full Size	#82959	600
<b>R.</b> Anti-Reflux Elevating Bed Wedge, 24"W x 27"L x 7½"H	#82960	650
Anti-Reflux Elevating Bed Wedge, 24"W x 27"L x 9½"H	#82961	650
Anti-Reflux Elevating Bed Wedge, 24"W x 27"L x 12"H	#82962	650
<b>S.</b> PopitzPillow Supine Sniff Positioner, 10/cs	#932532	X-Large
<b>T.</b> Bean Bag Positioner w/Cutout and Gel Top, 46"W x 46"L	#925786	Bariatric
Bean Bag Positioner w/Cutout, 46"W x 46"L	#935235	Bariatric
<b>U.</b> Sandbag Positioning Set, set of 8 (2 of each size)	#936930	—
<b>V.</b> Surgical Thyroid Pillow	#937119	—
<b>W.</b> Protecta-Coat Deluxe Wide Knee Bolster, 20"W x 7½"H	#937333	—
<b>X.</b> InvisiCoat Plus Wedge Positioner, 45°, 24"L	#939139	—
InvisiCoat Plus Wedge Positioner, 45°, 30"L	#939143	—
InvisiCoat Plus Wedge Positioner, 35°/55°, 14"L	#939140	—
InvisiCoat Plus Wedge Positioner, 35°/55°, 24"L	#939138	—
InvisiCoat Plus Wedge Positioner, 20°, 11"L	#939141	—
InvisiCoat Plus Wedge Positioner, 15°, 10½"L	#939142	—

## Wheelchairs



**A.** Tracer® IV Wheelchairs



**B.** Traveler® HD Wheelchairs



**C.** Sentra EC Heavy-Duty Wheelchairs



**D.** Sentra EC Heavy-Duty, Extra-Wide Wheelchairs



**E.** Sentra Reclining Wheelchairs



**F.** ConvaQuip® 900 Series Wheelchairs



**G.** Karman Wheelchairs



**H.** Heavy-Duty Transport Chairs



**I.** EZ-UP Transport/Day Chairs



**J.** MRI Nonmagnetic Wheelchairs



**K.** MRI Nonmagnetic Wheelchairs



**L.** MRI Transport Stretchers

## Wheelchair Accessories



**M.** Adjustable Drop Seats



**N.** Wheelchair Anti-Rollback Systems



**O.** Extended Full Armrest Pads



**P.** Wheelchair Headrests



**Q.** Bariatric Swing-Away Foot Supports



**R.** Adjustable Lateral Supports



**S.** BreakAway Lap Cushions



**T.** SofTop™ Lap Trays



**U.** Seatbelt Extenders

**Need a larger size?**

**Custom** to *YOUR* specifications

Wheelchair Cushions • Positioners • Straps • And More @ [AliMed.com/custom](http://AliMed.com/custom)

### Wheelchairs

Wheelchairs	Item #	Wt. Cap. / Size
<b>A.</b> Tracer IV Wheelchair, 22"W seat, Desk Arms	#713241	450
Tracer IV Wheelchair, 24"W seat, Desk Arms	#713242	450
<b>B.</b> Traveler HD Wheelchair, 22"W seat, Desk Arms*	#74754	500
Traveler HD Wheelchair, 24"W seat, Desk Arms*	#74755	500
Traveler HD Wheelchair, 24"W seat, Desk Arms**	#74758	500
<b>C.</b> Sentra EC Heavy-Duty WC, 24"W seat, Desk Arms***	#713791	450
Sentra EC Heavy-Duty WC, 24"W seat, Full Arms***	#713793	450
<b>D.</b> Sentra EC HD, Extra-Wide WC, 26"W seat, Desk Arms	#72338	700
Sentra EC HD, Extra-Wide WC, 28"W seat, Desk Arms	#72339	700
Sentra EC HD, Extra-Wide WC, 30"W seat, Desk Arms	#72340	700
<b>E.</b> Sentra Reclining Wheelchair, 22"W seat, Desk Arms**	#71791	450
<b>F.</b> ConvaQuip 926 XL Wheelchair, 26"W seat, Full Arms*	#78569	700
ConvaQuip 928 XL Wheelchair, 28"W seat, Full Arms*	#78570	700
ConvaQuip 930 XL Wheelchair, 30"W seat, Full Arms*	#78571	700
<b>G.</b> Karman Wheelchair, 22"W, Desk Arms*	#712480	450
Karman Wheelchair, 24"W, Desk Arms*	#712481	450
<b>H.</b> Heavy-Duty Transport Chair, 22"W seat	#77791	450
<b>I.</b> EZ-UP Transport/Day Chair, 24"W seat	#710406	500
EZ-UP Transport/Day Chair, 28"W seat	#710407	1,000

\*Includes swing-away footrests.

\*\*Includes swing-away elevating leg rests.

\*\*\*Includes swing-away footrests. Elevating leg rests at [AliMed.com](http://AliMed.com).

<b>J.</b> MRI Nonmagnetic Wheelchair, 26"W seat, Desk Arms	#936737	550
<b>K.</b> MRI Nonmagnetic Wheelchair, 24"W seat, Desk Arms	#935459	350
MRI Nonmagnetic Wheelchair, 26"W seat, Desk Arms	#921814	550
<b>L.</b> MRI Transport Stretcher, 30"W x 70"L x 39"H	#926928	600

### Wheelchair Accessories

Wheelchair Accessories	Item #	Wt. Cap. / Size
<b>M.</b> Adjustable Drop Seat, 18½"-22"W	#1140	Large Adult
<b>N.</b> Wheelchair Anti-Rollback System	#65335	Fits 22"-24"W WC
Wheelchair Anti-Rollback System and Alarm	#65336	Fits 22"-24"W WC
<b>O.</b> Extended Full Armrest Pad, Black, 22"L, pr	#8777	—
<b>P.</b> Extra-Depth Wheelchair Headrest, 4¾"D	#8776	—
<b>Q.</b> Bariatric Swing-Away Foot Support, pr	#703477	Fits 22"-30"W WC
Bariatric Swing-Away Foot Support, Left	#703475	Fits 22"-30"W WC
Bariatric Swing-Away Foot Support, Right	#703476	Fits 22"-30"W WC
<b>R.</b> Adjustable Lateral Support, 18"-28"W	#706059	Large/Bariatric
<b>S.</b> BreakAway Lap Cushion	#71349	Fits 20"-26"W WC
<b>T.</b> SofTop Lap Tray, Blue Vinyl	#705022	Fits 20"-22"W WC
SofTop Lap Tray, Black Nylon	#705024	Fits 24"-28"W WC
<b>U.</b> Seatbelt Extender, 12"L	#79205	—

## Mobility Aids



**A.** Rollators



**B.** Go-Lite Rollators



**C.** Universal Dualie Wheeled Folding Walkers



**D.** Universal Heavy-Duty Folding Walkers



**E.** Folding Walkers



**F.** Walker Platform Attachments



**G.** Wheeled Heavy-Duty Quad Canes



**H.** Heavy-Duty Canes



**I.** Heavy-Duty Crutches



**J.** Forearm Crutches

## Beds & Accessories



**K.** ConvaQuip® Electric Beds



**L.** Med-Aire Alternating Pressure Mattresses



**M.** Mattresses



**N.** Comfort Mattresses

## Skin Protection



**O.** Geri-Sleeve Skin Protectors



**P.** Original Heel-Float Heel Protectors



**Q.** Heel-Up Foot Positioners



**R.** FootPillow Heel Protectors



**S.** Heelift® Suspension Boots



**T.** Heelift® Glide Suspension Boots



**U.** SoftPro™ In-Bed AFOs



**V.** Elevation Heel Suspension Boots



**W.** Heel and Ankle Offloading Boots

### Mobility Aids

	Item #	Wt. Cap. / Size
<b>A.</b> Rollator w/Pouch, 18"W seat	#713279	500
<b>B.</b> Go-Lite Rollator w/Basket, 18"W seat	#77822	500
<b>C.</b> Extra-Wide Universal Dualie Wheeled Folding Walker, 29"W	#74862	600
<b>D.</b> Universal Heavy-Duty Folding Walker, 26½"W	#75709	700
<b>E.</b> Folding Walker, 25¼"W	#70584	500
<b>F.</b> Walker Platform Attachment	#70586	500
<b>G.</b> Wheeled Heavy-Duty Quad Cane, Left-Handed	#711976	600
Wheeled Heavy-Duty Quad Cane, Right-Handed	#711977	600
<b>H.</b> Heavy-Duty Cane, Adjusts 29"-38"	#82329	500/Adult
Heavy-Duty Cane, Adjusts 31"-40"	#82328	500/Tall Adult
<b>I.</b> Heavy-Duty Crutches, Adjusts 44"-52", pr	#81764	700/Adult
Heavy-Duty Crutches, Adjusts 52"-60", pr	#81765	700/Tall
Heavy-Duty Crutches, Adjusts 60"-68", pr	#81766	700/X-Tall
<b>J.</b> Forearm Crutches, pr	#711975	700

### Beds & Accessories

	Item #	Wt. Cap. / Size
<b>K.</b> ConvaQuip Electric Bed, 39"-48"W x 80"L Mattress/Trapeze not included, accessories at <a href="http://AliMed.com">AliMed.com</a>	#78470	750
<b>L.</b> Med-Aire Alternating Pressure and Low Air Loss Mattress System, 36"W x 80"L x 8"H	#79264	450
<b>M.</b> Mattress, 39"W x 80"L x 7"H	#711792	800
Mattress, 48"W x 80"L x 7"H	#711794	800
Mattress, 39"W x 80"L x 7½"H	#711796	1,000

<b>N.</b> Comfort DS Mattress, 35"W x 80"L x 7"H	#711815	450
Comfort EW Mattress, 39"W x 80"L x 7"H	#711816	1,000
Comfort EW Mattress, 42"W x 80"L x 7"H	#711817	1,000

### Skin Protection

	Item #	Wt. Cap. / Size
<b>O.</b> Geri-Sleeve Skin Protector, Arm, 5"W x 19"L, pr	#503357	Large/Bariatric
Geri-Sleeve Skin Protector, Arm, 5"W x 19"L, 25 pr/cs	#503358	Large/Bariatric
<b>P.</b> Original Heel-Float Heel Protector, 5"W	#503036	Large/Bariatric
Heel-Float Foot Stabilizer	#503038	Large/Bariatric
<b>Q.</b> Heel-Up Foot Positioner, 5"W	#65949	Bariatric
Heel-Up Foot Positioner, 5"W, 6/cs	#6594906	Bariatric
<b>R.</b> FootPillow Heel Protector, 5½"W x 10½"L, pr	#65382	Bariatric
FootPillow Heel Protector, 5½"W x 10½"L, 6 pr/cs	#65942	Bariatric
<b>S.</b> Heelift Suspension Boot, Smooth Foam	#66017	600/Bariatric
Heelift Suspension Boot, Smooth Foam, 6/cs	#6601706	600/Bariatric
<b>T.</b> Heelift Glide Suspension Boot, Smooth Foam	#66639	600/Bariatric
<b>U.</b> SoftPro In-Bed AFO	#66400	Bariatric
<b>V.</b> Elevation Heel Suspension Boot	#66512	Specify Bariatric
Elevation Heel Suspension Boot w/Footdrop Strap	#66514	Bariatric
<b>W.</b> Heel and Ankle Offloading Boot	#66516	Bariatric

## Safe Patient Handling



**A.** Electric Patient Lifts



**B.** Hoyer® Partner HPL-402 Patient Lifts



**C.** BestLift™ Full-Body Patient Lifts



**D.** BestStand™ Sit-to-Stand Patient Lifts



**E.** GLC Reusable Patient Slings



**F.** Split-Leg Reusable Patient Slings



**G.** Full-Body Reusable Patient Slings



**H.** Single-Patient-Use Patient Slings



**I.** Stand-Assist Patient Slings



**J.** "No-Lift" TURNER® Repositioning Aids



**K.** "No-Lift" BOOSTER™ Repositioning Aids



**L.** The Glide Lateral Air Transfer Systems



**M.** Anti-Stat Patient Shifters



**N.** MegaMover® Portable Transport Units



**O.** Comfort QC Ambulation Belts



**P.** Wipeable Gait Belts



**Q.** Trapezes



**R.** Turner Repositioning Aids



**S.** Bed Transfer Handles



**T.** Bed Rail Advantage Traveler Transfer Aids



**U.** Heavy-Duty Transfer Boards

## Orthopedic Bracing



**V.** Elbow Immobilizers



**W.** Knee Immobilizers



**X.** Ultimate Arm Sling®

## Safe Patient Handling

	Item #	Wt. Cap. / Size
<b>A.</b> Electric Patient Lift	#13240	450
Heavy-Duty Electric Patient Lift	#70030	600
<b>B.</b> Hoyer Partner HPL-402 Patient Lift	#74123	400
Hoyer Patient Sling	#70084	300/Large
<b>C.</b> BestLift Full-Body Patient Lift	#713844	600
<b>D.</b> BestStand Sit-to-Stand Patient Lift	#713847	600
<b>E.</b> GLC Reusable Patient Sling w/o Head Support	#712971	600
GLC Reusable Patient Sling w/Head Support	#712975	600
<b>F.</b> Split-Leg Reusable Patient Sling, Padded Seat	#72080	600/Bariatric
<b>G.</b> Full-Body Reusable Patient Sling, Mesh Seat	#78258	600/Bariatric
Full-Body Reusable Patient Sling, Mesh Seat/Commode	#78259	600/Bariatric
<b>H.</b> Single-Patient-Use Sling w/Head Support, 10/cs	#710088	600/Bariatric
Single-Patient-Use Sling, Full Body/Commode, 10/cs	#712961	300/Large
Single-Patient-Use Sling, Full Body/Commode, 10/cs	#712963	600/XXL
<b>I.</b> Stand-Assist Patient Sling	#79853	600/Bariatric
Stand-Assist Buttocks Strap	#79854	600/Bariatric
<b>J.</b> "No-Lift" TURNER Repositioning Aid, 46"W x 46"L	#712177	750/Bariatric
<b>K.</b> "No-Lift" BOOSTER Repositioning Aid, 46"W x 46"L	#75582	600/Bariatric
The Glide Lateral Air Transfer System, 46"W x 78"L	#938607	1,000/Bariatric
Accessories at <a href="#">AliMed.com</a>		
The Glide Lateral Air Transfer System, Protective Sheet	#938601	Bariatric

<b>M.</b> Anti-Stat Patient Shifter, 38"W x 72"L	#935944	600/Bariatric
MegaMover Transport Unit, Model 1500, 40"W x 80"L		
<b>N.</b> White with Black handles	#71983	1,000
MegaMover Transport Unit, Model Plus, 40"W x 80"L		
Grey with Black handles, accommodates backboards	#71985	1,000
<b>O.</b> Comfort QC Ambulation Belt, 70"L	#713889	Fits waists 30"-50"
<b>P.</b> Wipeable Gait Belt, 96"L, Safety Yellow	#711779	Bariatric
<b>Q.</b> Trapeze, 73"H	#78212	1,000
<b>R.</b> Turner Repositioning Aid, 30"W x 72"L	#77806	400
<b>S.</b> Bed Transfer Handle, 11½"W x 32½"H	#8639	600
<b>T.</b> Bed Rail Advantage Traveler Transfer Aid, 17"W x 22"H	#710319	400
<b>U.</b> Heavy-Duty Transfer Board, 10"W x 32"L	#77817	650

## Orthopedic Bracing

	Item #	Wt. Cap. / Size
<b>V.</b> Elbow Immobilizer, 13"L	#52114	Bariatric
<b>W.</b> Knee Immobilizer, 15"L	#64965	Bariatric
Knee Immobilizer, 18"L	#64966	Bariatric
Knee Immobilizer, 21"L	#64967	Bariatric
Knee Immobilizer, 24"L	#64968	Bariatric
<b>X.</b> Ultimate Arm Sling®	#51942	300/Pro 3XL
Ultimate Arm Sling®	#51943	300+/Goliath

## Bathing & Toileting



**A.**  **Bariatric Bed Pans**



**B.** **Big John Toilet Seats**



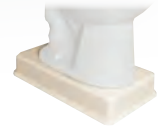
**C.** **Toilet Supports**



**D.** **Buttress Universal Toilet Supports**



**E.** **TOILEVATOR® GRANDE Risers**



**F.** **Easy Toilet Riser™**



**G.** **HipMode™ Commodes**



**H.** **Big John Commode Chairs**



**I.** **Large Commodes**



**J.** **Extra-Wide Drop-Arm Commodes**



**K.** **Commode Pails with Lid**



**L.** **Heavy-Duty Transfer Benches**



**M.** **Heavy-Duty Sliding Transfer Benches**



**N.** **Deluxe Bath Benches**



**O.** **Shower Benches**



**P.** **Heavy-Duty Bath Seats**



**Q.** **Reclining Shower Commode Chairs**



**R.** **Extra-Wide Shower Commode Chairs**



**S.** **Shower Commode Chairs**



**T.** **Aluminum Shower Commode Chairs**



**U.** **Reclining Shower Gurneys**

## Patient Safety



**V.**  **Standardized Equipment Weight Capacity Labels**



**W.** **Pillow Paws® Risk-Alert™ Safety Footwear**

## Bathing & Toileting

	Item #	Wt. Cap. / Size
<b>A.</b> Bariatric Bed Pan, 14¼"W x 15"L x 3"H	#711255	1,200
Bariatric Bed Pan, 14¼"W x 15"L x 3"H, 20/cs	#71125520	1,200
Bed Pan Liner, 24"W x 15"L, 20/bx	#712745	—
<b>B.</b> Big John Toilet Seat, Original, Closed Front, w/o Lid	#710144	1,200
Big John Toilet Seat, Original, Open Front, w/o Lid	#713585	1,200
Big John Toilet Seat, Original, Open Front w/Lid	#711311	1,200
Big John Toilet Seat, Classic, Open Front, w/o Lid	#713581	1,200
Big John Toilet Seat, Standard, Closed Front w/Lid	#712118	800
<b>C.</b> Toilet Support, Standard, Adjusts 7½"-14"H	#710145	1,000
Toilet Support, Short Swivel, Adjusts 5"-7½"H	#711635	1,000
Support Step Ring	#712417	—
<b>D.</b> Buttress Universal Toilet Support	#712371	1,000
<b>E.</b> TOILEVATOR GRANDE Riser, 15½"W x 23¼"L x 3½"H	#712976	500
<b>F.</b> Easy Toilet Riser, 11"W x 23¾"L x 4"H	#711974	800
<b>G.</b> HipMode Commode, 17"W x 21"D seat	#712488	500
<b>H.</b> Big John Commode Chair, 19"W seat	#713580	800
<b>I.</b> Large Commode, 14¾"W x 19"D seat	#74866	700
<b>J.</b> Extra-Wide Drop-Arm Commode, 26¼"W x 21"D seat	#74867	850
<b>K.</b> Commode Pail w/Lid	#712416	—
<b>L.</b> Heavy-Duty Transfer Bench, 25½"W x 18½"D seat	#70127	500
<b>M.</b> Heavy-Duty Sliding Transfer Bench, 19"W x 15"D seat	#82299	400
<b>N.</b> Deluxe Bath Bench w/Back, 20"W x 12"D seat	#71923	500
Deluxe Bath Bench w/o Back, 20"W x 12"D seat	#71924	500

<b>O.</b> Shower Bench w/Back, 20"W x 14½"D	#7385	300
Shower Bench w/o Back, 20"W x 14½"D	#7386	300
<b>P.</b> Heavy-Duty Bath Seat w/Back, 21"W x 18"D seat	#88786	400
Heavy-Duty Bath Seat w/o Back, 21"W x 18"D seat	#88785	400
<b>Q.</b> Reclining Shower Commode Chair, Blue or Mauve	#72266	450
<b>R.</b> Extra-Wide Shower Commode Chair, Blue or Mauve	#77810	400
<b>S.</b> Shower Commode Chair, Blue, Mauve, or Putty	#72259	500
<b>T.</b> Aluminum Shower Commode Chair, Standard, 22"W	#713423	440
Aluminum Shower Commode Chair, Self-Propelled, 22"W	#713424	440
<b>U.</b> Reclining Shower Gurney, Blue or Mauve	#72255	600

## Patient Safety

	Item #	Wt. Cap. / Size
<b>V.</b> Weight Capacity Label, Variety Pack, 25 of each, 175/pk	#711511	Variety
Weight Capacity Label, "30" Labels, 25/pk	#710926	300
Weight Capacity Label, "40" Labels, 25/pk	#710927	400
Weight Capacity Label, "50" Labels, 25/pk	#710928	500
Weight Capacity Label, "60" Labels, 25/pk	#710929	600
Weight Capacity Label, "70" Labels, 25/pk	#710930	700
Weight Capacity Label, "80" Labels, 25/pk	#710931	800
Weight Capacity Label, "100" Labels, 25/pk	#710932	1,000
Weight Capacity Label, "Not Bariatric", 150/pk	#711150	—
Weight Capacity Label, Blank Writable, 150/pk	#711171	—
<b>W.</b> Pillow Paws Risk-Alert Safety Footwear, Red, 48 pr/cs	#712278	3XL

## Clinical Furniture



**A.** Parallel Bars, Platform-Mounted



**B.** Parallel Bars, Floor-Mounted



**C.** Training Staircases



**D.** Two-Sided Mini Training Staircases



**E.** Convertible Training Staircases



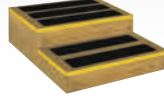
**F.** Safety Step Stools



**G.** Footstools



**H.** XL Safe Step Footstool



**I.** Wooden Footstools



**J.** Extra-Wide Blood Drawing Chairs



**K.** Extra-Large Three-Position Recliners



**L.** Extra-Wide Infinite Position Recliners



**M.** ConvaQuip® Recliners



**N.** Cardiac Care Cliners



**O.** Extra Wide Three-Position Recliners



**P.** Dual-Lift Powermatic Mat Platforms



**Q.** Mat Platforms



**R.** Treatment Tables with Shelf



**S.** Treatment Tables with Shelf



**T.** Adjustable Back Treatment Tables w/H-Brace



**U.** Armedica™ Treatment Tables



**V.** X-L Power-Back Exam Tables



**W.** High-Low Exam Tables



**X.** Electric Tilt Tables

## Clinical Furniture

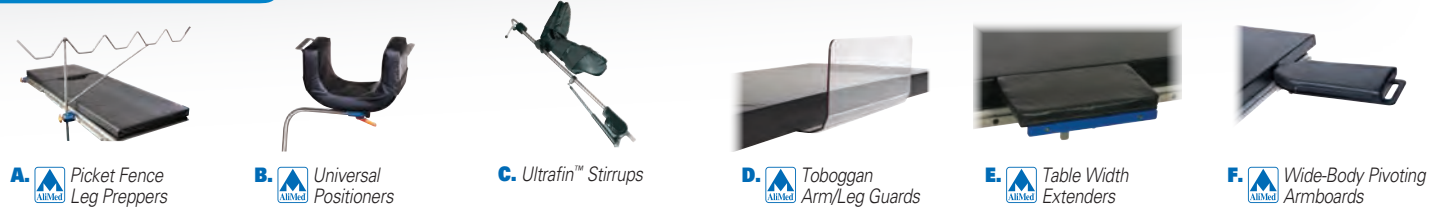
	Item #	Wt. Cap. / Size
<b>A.</b> Parallel Bars, Platform-Mounted	#72219	600
<b>B.</b> Parallel Bars, Floor-Mounted	#713305	500
<b>C.</b> Training Staircase, 48"W steps	#713084	1,000
<b>D.</b> Two-Sided Mini Training Staircase, 30"W steps	#77149	500
<b>E.</b> Convertible Training Staircase, 30"W steps	#77148	500
<b>F.</b> Commercial Safety Step Stool, Yellow, 15"W x 19"L x 8¾"H	#71974	1,000
Universal Safety Step Stool, Silver, 11"W x 14"L x 8½"H	#71975	1,000
<b>G.</b> Footstool w/Handrail, 11¼"W x 14¼"L x 32"H	#927758	600
Footstool w/o Handrail, 11¼"W x 14¼"L x 9¼"H	#927757	600
<b>H.</b> XL Safe Step Footstool w/Handrail, 20"W x 25"L x 36"H	#711504	1,000
XL Safe Step Footstool w/o Handrail, 20"W x 25"L x 8"H	#711505	1,000
<b>I.</b> Wooden Footstool, 24"W x 8"H x 28"D	#72216	500
<b>J.</b> Extra-Wide Blood Drawing Chair, 24¼"W seat	#931286*	450
<b>K.</b> Extra-Large Three-Position Recliner, 25"W seat	#75288*	450
<b>L.</b> Extra-Wide Infinite Positioner Recliner, 24"W seat	#73096*	400
<b>M.</b> ConvaQuip Recliner, 29¼"W seat	#72643*	850
<b>N.</b> Cardiac Care Cliner w/Drop Arm, 25"W seat, Steel Casters	#922869*	450
Cardiac Care Cliner w/Drop Arm, 25"W seat, Nylon Casters	#922870*	450
Cardiac Care Cliner, 25"W seat, Steel Casters	#930925*	450
Cardiac Care Cliner, 25"W seat, Nylon Casters	#932437*	450
<b>O.</b> Extra Wide Three-Position Recliner, 25"W seat	#72667*	500

\*Multiple color options available

<b>P.</b> Dual-Lift Powermatic Mat Platform, 4"W x 6'L x 19"-28"H	#75156*	700
Dual-Lift Powermatic Mat Platform, 4"W x 7'L x 19"-28"H	#75157*	700
Dual-Lift Powermatic Mat Platform, 5"W x 7'L x 19"-28"H	#75158*	700
Dual-Lift Powermatic Mat Platform, 6"W x 8'L x 19"-28"H	#75159*	700
<b>Q.</b> Mat Platform, 4"W x 7'L x 18"H	#78715*	700
Mat Platform, 5"W x 7'L x 18"H	#78716*	700
Mat Platform, 6"W x 8'L x 18"H	#78717*	700
<b>R.</b> Treatment Table w/Shelf, 30"W x 78"L x 26"H	#78713*	600
Treatment Table w/Shelf, 30"W x 78"L x 31"H	#710502*	600
<b>S.</b> Treatment Table w/Shelf, 30"W x 78"L x 26"H	#75151*	600
Treatment Table w/Shelf, 30"W x 78"L x 31"H	#72220*	600
<b>T.</b> Adj. Back Treatment Table w/H-Brace, 34"W x 78"L x 28"H	#713306*	1,000
<b>U.</b> Armedica Treatment Table, 36"W x 72"L x 22"-38"H	#710016*	800
<b>V.</b> X-L Power-Back Exam Table, 29"W x 72"L x 33"H	#925577*	600
<b>W.</b> High-Low Power Exam Table, 28"W x 78"L x 18"-37"H	#924754*	450
High-Low Pneumatic Exam Table, 28"W x 78"L x 18"-37"H	#924752*	450
<b>X.</b> Electric Tilt Table, 34"W x 77"L x 33"H	#77805	500

\*Multiple color options available

## O.R. Accessories



**A.** Picket Fence Leg Preppers

**B.** Universal Positioners

**C.** Ultrafin™ Stirrups

**D.** Toboggan Arm/Leg Guards

**E.** Table Width Extenders

**F.** Wide-Body Pivoting Armboards



**G.** Wide Universal Armboards

**H.** Armboards

## Patient Straps



**I.** Radiolucent Abdominal Immobilizer Straps

**J.** Padded Super O.R. Table Straps

**K.** VeriClean™ O.R. Table Straps

**L.** AliStrap® Maxx Positioning Straps



**M.** Nonmetallic O.R. Table Straps

**N.** Nissen Straps

## Post-Op Accessories



**O.** Expand-A-Band Compression Bras

**P.** Expand-A-Band Breast Binders

## Imaging



**Q.** Weight Bearing Cassette Protectors

## Diagnostics



**R.** seca 634 Digital Platform Scales



**S.** DETECTO® Handrail Stand-On Scales

**T.** Health o meter® Digital Platform Scales

**U.** Health o meter® Antimicrobial Digital Platform Scales

**V.** Health o meter® Digital Wheelchair Ramp Scales

**W.** seca 676 Digital Wheelchair Scales

**X.** Diagnostix™ 720 Aneroid Sphygmomanometers with AdCuff™

O.R. Accessories	Item #	Wt.	Cap. / Size
<b>A.</b> Picket Fence Leg Prepper, 54"L x 30½"H	#925469	—	
<b>B.</b> Universal Positioner, 12"W	#925467	—	
<b>C.</b> Ultrafin Stirrup w/Clamshell Pad, pr	#926582	800	
<b>D.</b> Toboggan Arm/Leg Guard, Straight, 10"W x 8"H x 10¼"D, pr	#924913	Large	
Toboggan Arm/Leg Guard, Curved, 15¾"W x 10½"H x 10¼"D, pr	#931176	Large	
Toboggan Arm/Leg Guard, Low-Profile, 15¾"W x 5"H x 10¼"D, pr	#938258	Large	
<b>E.</b> Table Width Extender, 8"W x 11"L	#937306	—	
Table Width Extender, 8"W x 15"L	#937305	—	
<b>F.</b> Wide-Body Pivoting Armboard, 11"W x 27"L	#937852	—	
<b>G.</b> Wide Universal Armboard, 31½"L x 11½"W, tapers to 6"W	#935196	—	
<b>H.</b> Armboard, 8"W x 26"L	#923475	1,000	
Armboard Pad for #923475, 6"H	#925402	1,000	

Patient Straps	Item #	Wt.	Cap. / Size
<b>I.</b> Radiolucent Abdominal Immobilizer Strap, 1-Closure, 14"W x 120"L	#925573	—	
Radiolucent Abdominal Immobilizer Strap, 3-Closure, 14"W x 96"L	#925574	—	
Radiolucent Abdominal Immobilizer Strap, 3-Closure, 14"W x 120"L	#925575	—	
<b>J.</b> Padded Super O.R. Table Strap, 12"W x 30"L mid-panel, 142"L	#932447	1,000	
<b>K.</b> VeriClean O.R. Table Strap, 11"W x 30"L mid-panel, 140"L	#937678	1,000	
<b>L.</b> AliStrap Maxx Positioning Strap, 10"W x 30"L roll	#95-908	—	
<b>M.</b> Nonmetallic O.R. Table Strap w/o Compression Pad, 10"W x 120"L	#925471	—	
Nonmetallic O.R. Table Strap w/Compression Pad, 10"W x 120"L	#925470	—	
<b>N.</b> Nissen Strap, 7"W x 31"L pads, pr	#923477	1,000	

Post-Op Accessories	Item #	Wt.	Cap. / Size
<b>O.</b> Expand-A-Band Compression Bra	#938240*	Specify XL or XXL	
<b>P.</b> Expand-A-Band Breast Binder, Lined	#938634*	Specify XL or XXL	

\*Multiple color options available

Imaging	Item #	Wt.	Cap. / Size
<b>Q.</b> Weight Bearing Cassette Protector, Fits 14" x 17" cassettes	#937586	750	

Diagnostics	Item #	Wt.	Cap. / Size
<b>R.</b> seca 634 Digital Platform Scale	#933018	800	
<b>S.</b> DETECTO Handrail Stand-On Scale, Full-Size	#78362	1,000	
<b>T.</b> Health o meter Digital Platform Scale w/Standard Handrail	#933045	1,000	
Health o meter Digital Platform Scale w/Xtrawide Handrail	#960736	1,000	
<b>U.</b> Health o meter Antimicrobial Digital Platform Scale, LB/KG	#937984	1,000	
Health o meter Antimicrobial Digital Platform Scale, KG Only	#960747	1,000	
<b>V.</b> Health o meter Digital Wheelchair Ramp Scale, LB/KG	#933037	1,000	
Health o meter Digital Wheelchair Ramp Scale, KG Only	#960741	1,000	
<b>W.</b> seca 676 Digital Wheelchair Scale w/Handrail	#936100	800	
<b>X.</b> Diagnostix 720 Aneroid Sphyg w/Adcuff, 17¼"-26" arm circ.	#939276	—	
AdCuff Sphyg Cuff Only, 17¼"-26" arm circ.	#939277	—	