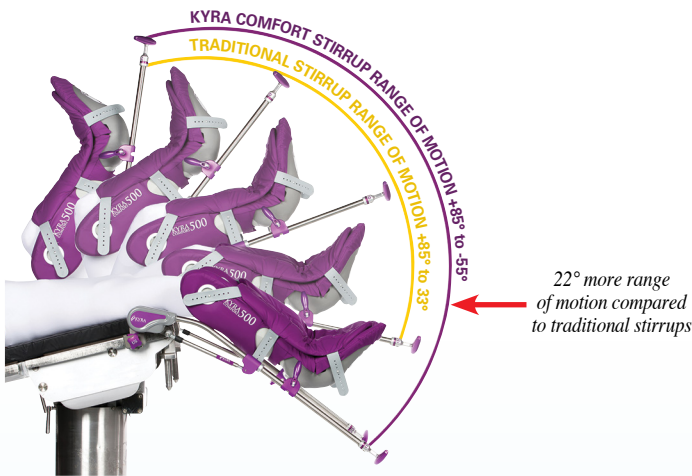




# Innovative, premium surgical positioning products

## KYRA Comfort™ Family of Lithotomy Stirrups

- Curved rod provides more range of motion and working space
- Eliminates hook-and-loop straps for improved infection control
- Larger boot and more padding supports a range of patient sizes
- Available in 350-lb., 500-lb., or 800-lb. capacities



Scan to watch the video and view all models!




Integrated gel pads allow for more abdomen space



Storage Cart for secure transport

## KYRA Curve™ Spine Frame System

- Provides a stable platform and maximum lordosis for spine surgeries
- Intraoperatively adjustable for optimal site access
- Gel pads sized to accommodate larger patients
- Easy-to-clean fabric-free silicone straps
- Fits "Jackson style" rails and O.R. tables
- Radiolucent
- 600-lb. capacity
- System includes: Curve Spine Frame, Crank Handle, Strap Connector, and Storage Cart

Scan for complete system details and more accessories!



See reverse for more KYRA products 

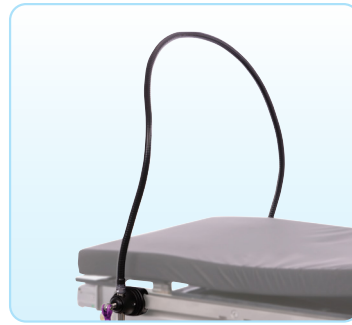
# Shop these KYRA accessories...



Strirrup Carts



Goepel Knee Crutches



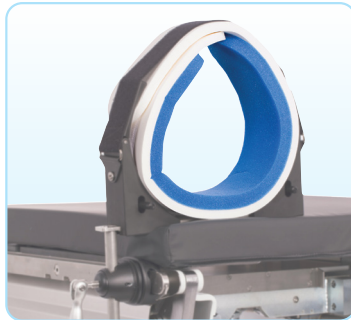
Flexible Anesthesia Screens



Nissen Straps



Well Leg Holders



Arthroscopic Leg Holders



Lateral Positioning Sets



Secondary Shoulder Supports



Swivel Armboards



Trigger Armboards



Clamshell Armboard Pads

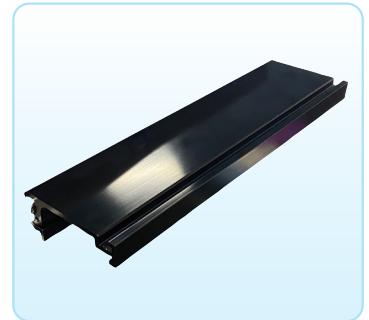


Table Width Extenders



Urology Attachment Bands  
and Drainage Bags



Secure-Release™ Clamps



Simple Blade Clamps



Round Post Clamps

...and so much more at [AliMed.com!](https://www.ali-med.com)



California Proposition 65 Statement

65 ⚠️ **WARNING:** This product can expose you to chemicals including Di(2-Ethylhexyl) Phthalate (DEHP), which is known to the State of California to cause cancer and birth defects or other reproductive harm. For more information go to <https://www.p65warnings.ca.gov>.

Pub. #8055 • Product #11622

©2023 AliMed® Inc. All rights reserved.



[AliMed.com](https://www.ali-med.com)

[customerservice@AliMed.com](mailto:customerservice@ali-med.com)

800.225.2610